

For Research Use Only

# SMAD1 Recombinant antibody, PBS Only (Capture)

Catalog Number: 85388-3-PBS



## Basic Information

Catalog Number:

85388-3-PBS

Concentration:

1000 ug/ml

Source:

Rabbit

Isotype:

IgG

Immunogen Catalog Number:

AG0701

GenBank Accession Number:

BC001878

GeneID (NCBI):

4086

UNIPROT ID:

Q15797

Full Name:

SMAD family member 1

Calculated MW:

52 kDa

Purification Method:

Protein A purification

CloneNo.:

242844C8

## Applications

Tested Applications:

Sandwich ELISA, Indirect ELISA, Sample test

Species Specificity:

human

## Background Information

### Storage

Storage:

Store at -80°C.

The product is shipped with ice packs. Upon receipt, store it immediately at -80°C

Storage Buffer:

PBS only, pH7.3

For technical support and original validation data for this product please contact:

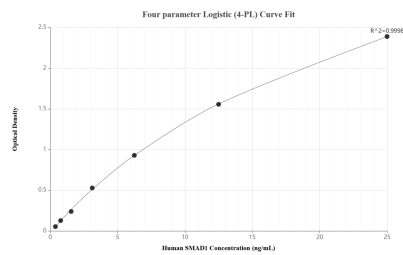
T: 4006900926

E: [Proteintech-CN@ptglab.com](mailto:Proteintech-CN@ptglab.com)

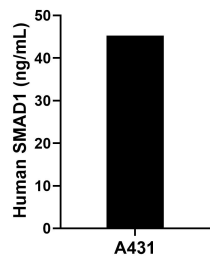
W: [ptgcn.com](http://ptgcn.com)

This product is exclusively available under Proteintech Group brand and is not available to purchase from any other manufacturer.

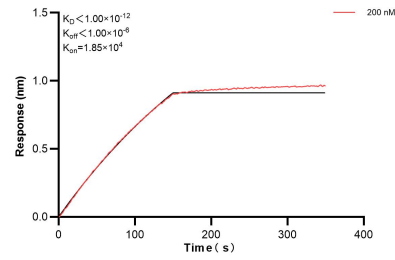
## Selected Validation Data



Sandwich ELISA standard curve of MP01962-1, Human SMAD1 Recombinant Matched Antibody Pair - PBS only. 85388-3-PBS was coated to a plate as the capture antibody and incubated with serial dilutions of standard Ag0701. 85388-2-PBS was HRP conjugated as the detection antibody. Range: 0.391-25 ng/mL.



The mean SMAD1 concentration was determined to be 45.30 ng/mL in A431 cell extract based on a 1.30 mg/mL extract load.



Biolayer Interferometry (BLI) kinetic assay of 85388-3-PBS against Human SMAD1 was performed. The affinity constant is below 1 pM.