

For Research Use Only

# SMAD1 Recombinant antibody, PBS Only (Detector)

Catalog Number: 85388-2-PBS



## Basic Information

Catalog Number:	85388-2-PBS	GenBank Accession Number:	BC001878	Purification Method:	Protein A purification
Concentration:	1000 ug/ml	GeneID (NCBI):	4086	CloneNo.:	242844C10
Source:	Rabbit	UNIPROT ID:	Q15797		
Isotype:	IgG	Full Name:	SMAD family member 1		
Immunogen Catalog Number:	AG0701	Calculated MW:	52 kDa		

## Applications

**Tested Applications:**  
Sandwich ELISA, Indirect ELISA, Sample test

**Species Specificity:**  
human

## Background Information

### Storage

**Storage:**  
Store at -80°C.  
**The product is shipped with ice packs. Upon receipt, store it immediately at -80°C**

**Storage Buffer:**  
PBS only

For technical support and original validation data for this product please contact:

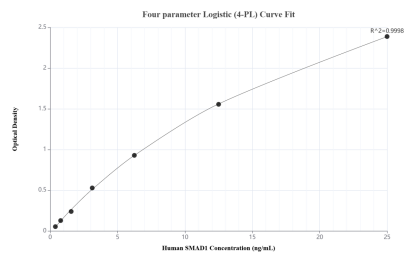
T: 4006900926

E: [Proteintech-CN@ptglab.com](mailto:Proteintech-CN@ptglab.com)

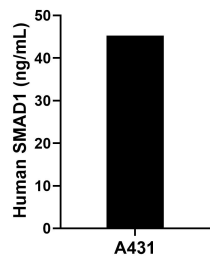
W: [ptgcn.com](http://ptgcn.com)

**This product is exclusively available under Proteintech Group brand and is not available to purchase from any other manufacturer.**

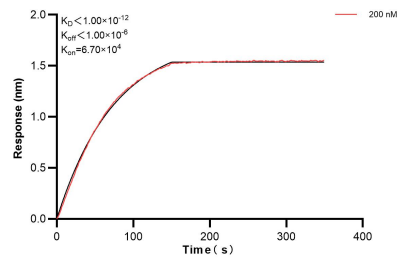
## Selected Validation Data



Sandwich ELISA standard curve of MP01962-1, Human SMAD1 Recombinant Matched Antibody Pair - PBS only. 85388-3-PBS was coated to a plate as the capture antibody and incubated with serial dilutions of standard Ag0701. 85388-2-PBS was HRP conjugated as the detection antibody. Range: 0.391-25 ng/mL.



The mean SMAD1 concentration was determined to be 45.30 ng/mL in A431 cell extract based on a 1.30 mg/mL extract load.



Biolayer interferometry (BLI) kinetic assay of 85388-2-PBS against Human SMAD1 was performed. The affinity constant is below 1 pM.