

For Research Use Only

# MAP4K4 Recombinant monoclonal antibody

Catalog Number:85387-2-RR



## Basic Information

**Catalog Number:**

85387-2-RR

**Source:**

Rabbit

**Isotype:**

IgG

**GenBank Accession Number:**

NM\_004834

**GeneID (NCBI):**

9448

**UNIPROT ID:**

O95819

**Full Name:**

mitogen-activated protein kinase  
kinase kinase kinase 4

**Calculated MW:**

151 kDa

**Observed MW:**

130-160 kDa

**Purification Method:**

Protein A purification

**CloneNo.:**

242721G2

**Recommended Dilutions:**

WB: 1:1000-1:6000

## Applications

**Tested Applications:**

WB, ELISA

**Species Specificity:**

human

**Positive Controls:**

WB : Jurkat cells, HepG2 cells

## Background Information

MAP4K4, also named as RAB8IPL1, GLK and MEKKK4, belongs to the protein kinase superfamily, STE Ser/Thr protein kinase family and STE20 subfamily. It may play a role in the response to environmental stress. MAP4K4 appears to act upstream of the JUN N-terminal pathway.

## Storage

**Storage:**

Store at -20°C. Stable for one year after shipment.

**Storage Buffer:**

PBS with 0.02% sodium azide and 50% glycerol, pH7.3

Aliquoting is unnecessary for -20°C storage

For technical support and original validation data for this product please contact:

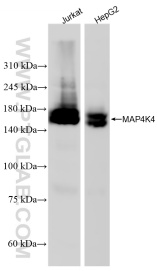
T: 4006900926

E: [Proteintech-CN@ptglab.com](mailto:Proteintech-CN@ptglab.com)

W: [ptgcn.com](http://ptgcn.com)

**This product is exclusively available under Proteintech Group brand and is not available to purchase from any other manufacturer.**

## Selected Validation Data



Various lysates were subjected to SDS PAGE followed by western blot with 85387-2-RR (MAP4K4 antibody) at dilution of 1:3000 incubated at room temperature for 1.5 hours.