

For Research Use Only

KATNAL1 Recombinant antibody, PBS Only

Catalog Number: 85382-1-PBS



Basic Information

| | | |
|--------------------------------------|--|--|
| Catalog Number: 85382-1-PBS | GenBank Accession Number: BC000612 | Purification Method: Protein A purification |
| Concentration: 1 mg/ml | GeneID (NCBI): 84056 | CloneNo.: 242796B5 |
| Source: Rabbit | UNIPROT ID: Q9BW62 | |
| Isotype: IgG | Full Name: katanin p60 subunit A-like 1 | |
| Immunogen Catalog Number: AG13960 | Calculated MW: 490 aa, 55 kDa | |
| | Observed MW: 50-55 kDa | |

Applications

Tested Applications:
WB, Indirect ELISA

Species Specificity:
human, rat

Background Information

KATNAL1 belongs to a family of microtubule-severing proteins and contains an N-terminal microtubule interaction and trafficking (MIT) domain, an ATPase AAA-type core domain, and a C-terminal Vps4_C domain. KATNAL1 is involved in regulating microtubule dynamics, which is essential for spermiogenesis and male fertility. It severs microtubules in an ATP-dependent manner, promoting rapid reorganization of cellular microtubule arrays (PMID: 22654668). In neurons, KATNAL1 plays a role in microtubule rearrangement during neuronal migration and process elongation. Additionally, mutations in KATNAL1 have been associated with intellectual disability and microcephaly in humans (PMID: 30448058).

Storage

Storage:
Store at -80°C.
The product is shipped with ice packs. Upon receipt, store it immediately at -80°C

Storage Buffer:
PBS Only

For technical support and original validation data for this product please contact:

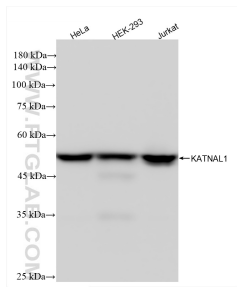
T: 4006900926

E: Proteintech-CN@ptglab.com

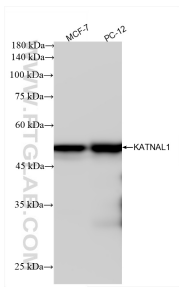
W: ptgcn.com

This product is exclusively available under Proteintech Group brand and is not available to purchase from any other manufacturer.

Selected Validation Data



Various lysates were subjected to SDS PAGE followed by western blot with 85382-1-RR (KATNAL1 antibody) at dilution of 1:10000 incubated at room temperature for 1.5 hours. This data was developed using the same antibody clone with 85382-1-PBS in a different storage buffer formulation.



Various lysates were subjected to SDS PAGE followed by western blot with 85382-1-RR (KATNAL1 antibody) at dilution of 1:10000 incubated at room temperature for 1.5 hours. This data was developed using the same antibody clone with 85382-1-PBS in a different storage buffer formulation.