

For Research Use Only

ERLIN1 Recombinant antibody, PBS Only

Catalog Number: 85377-1-PBS



Basic Information

Catalog Number: 85377-1-PBS	GenBank Accession Number: BC031791	Purification Method: Protein A purification
Concentration: 1 mg/ml	GeneID (NCBI): 10613	CloneNo.: 242778B10
Source: Rabbit	UNIPROT ID: O75477	
Isotype: IgG	Full Name: ER lipid raft associated 1	
Immunogen Catalog Number: AG11393	Calculated MW: 346 aa, 39 kDa	
	Observed MW: 39 kDa	

Applications

Tested Applications:
WB, Indirect ELISA

Species Specificity:
human

Background Information

ERLIN1, also known as Erlin-1 or SPFH1, stands for "ER lipid raft-associated protein 1." It is a protein-coding gene that plays a significant role in cellular processes, particularly in the endoplasmic reticulum (ER). The ER is a crucial organelle involved in protein synthesis, lipid metabolism, and calcium homeostasis. ERLIN1 is part of the SPFH (stomatin, prohibitin, flotillin, and HflK/C) domain-containing family of proteins, which are often associated with lipid rafts-microdomains within cellular membranes that are enriched in cholesterol and sphingolipids. ERLIN1 is involved in the regulation of protein degradation, particularly through the ER-associated degradation (ERAD) pathway (PMID: 37683630).

Storage

Storage:
Store at -80°C.

The product is shipped with ice packs. Upon receipt, store it immediately at -80°C

Storage Buffer:
PBS Only

For technical support and original validation data for this product please contact:

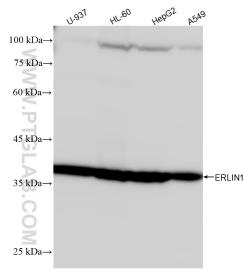
T: 4006900926

E: Proteintech-CN@ptglab.com

W: ptgcn.com

This product is exclusively available under Proteintech Group brand and is not available to purchase from any other manufacturer.

Selected Validation Data



Various lysates were subjected to SDS PAGE followed by western blot with 85377-1-RR (ERLIN1 antibody) at dilution of 1:5000 incubated at room temperature for 1.5 hours. This data was developed using the same antibody clone with 85377-1-PBS in a different storage buffer formulation.