

For Research Use Only

SLC25A6-Specific Recombinant antibody

Catalog Number: 85368-1-RR



Basic Information

Catalog Number:

85368-1-RR

Concentration:

1000 µg/ml

Source:

Rabbit

Isotype:

IgG

GenBank Accession Number:

NM_001636

GeneID (NCBI):

293

UNIPROT ID:

P12236

Full Name:

solute carrier family 25
(mitochondrial carrier; adenine
nucleotide translocator), member 6

Calculated MW:

33 kDa

Observed MW:

30-33 kDa

Purification Method:

Protein A purification

CloneNo.:

242652A8

Recommended Dilutions:

WB 1:5000-1:50000

IF/ICC 1:250-1:1000

Applications

Tested Applications:

WB, IF/ICC, ELISA

Species Specificity:

human, mouse, rat

Positive Controls:

WB : HEK-293 cells, L02 cells, A549 cells, HuH-7 cells,
mouse heart tissue, rat heart tissue, human placenta

IF/ICC : A549 cells,

Background Information

SLC25A6, also known as ANT3 (adenine nucleotide translocase 3), is a member of the solute carrier family 25, specifically the mitochondrial carrier subfamily. As part of the mitochondrial carrier family, SLC25A6 plays a role in the mitochondrial energy production process by facilitating the exchange of metabolites necessary for oxidative phosphorylation (PMID: 23506884).

Storage

Storage:

Store at -20°C. Stable for one year after shipment.

Storage Buffer:

PBS with 0.02% sodium azide and 50% glycerol

Aliquoting is unnecessary for -20°C storage

For technical support and original validation data for this product please contact:

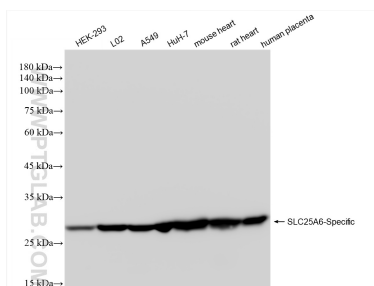
T: 4006900926

E: Proteintech-CN@ptglab.com

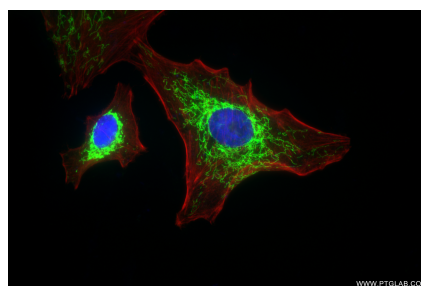
W: ptgcn.com

This product is exclusively available under Proteintech Group brand and is not available to purchase from any other manufacturer.

Selected Validation Data



Various lysates were subjected to SDS PAGE followed by western blot with 85368-1-RR (SLC25A6-Specific antibody) at dilution of 1:10000 incubated at room temperature for 1.5 hours.



Immunofluorescent analysis of (4% PFA) fixed A549 cells using SLC25A6-Specific antibody (85368-1-RR, Clone: 242652A8) at dilution of 1:500 and CoraLite® 488-Conjugated Goat Anti-Rabbit IgG(H+L) (SA00013-2), CL594-Phalloidin (red).