

For Research Use Only

UBE4B Recombinant antibody, PBS Only (Capture/Detector)

Catalog Number: 85332-5-PBS



Basic Information

Catalog Number:

85332-5-PBS

Concentration:

1 mg/ml

Source:

Rabbit

Isotype:

IgG

Immunogen Catalog Number:

AG12836

GenBank Accession Number:

BC093696

GeneID (NCBI):

10277

UNIPROT ID:

O95155

Full Name:

ubiquitination factor E4B (UFD2
homolog, yeast)

Calculated MW:

1173 aa, 133 kDa

Purification Method:

Protein A purification

CloneNo.:

242218F2

Applications

Tested Applications:

Cytometric bead array, Sandwich ELISA, Indirect ELISA,
Sample test

Species Specificity:

human

Background Information

Storage

Storage:

Store at -80°C.

The product is shipped with ice packs. Upon receipt, store it immediately at -80°C

Storage Buffer:

PBS only, pH7.3

For technical support and original validation data for this product please contact:

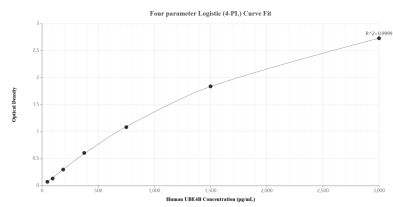
T: 4006900926

E: Proteintech-CN@ptglab.com

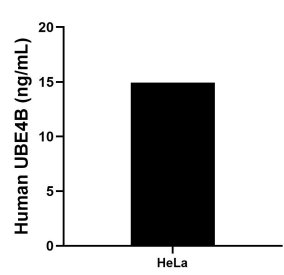
W: ptgcn.com

This product is exclusively available under Proteintech Group brand and is not available to purchase from any other manufacturer.

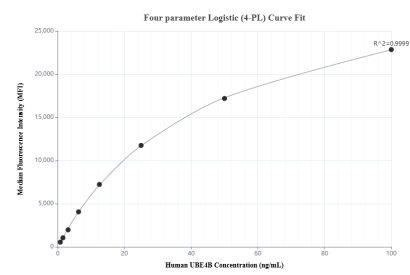
Selected Validation Data



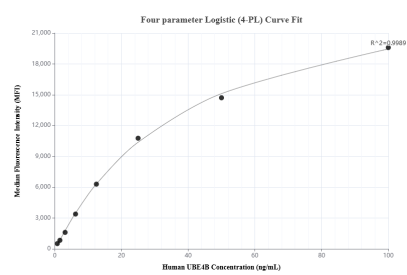
Sandwich ELISA standard curve of MP02017-3, Human UBE4B Recombinant Matched Antibody Pair - PBS only. 85332-5-PBS was coated to a plate as the capture antibody and incubated with serial dilutions of standard Ag12836. 85332-3-PBS was HRP conjugated as the detection antibody. Range: 46.9-3000 pg/mL.



The mean UBE4B concentration was determined to be 14.9 ng/mL in HeLa cell extract based on a 2.1 mg/mL extract load.



Cytometric bead array standard curve of MP02017-1, UBE4B Recombinant Matched Antibody Pair, PBS Only. Capture antibody: 85332-5-PBS. Detection antibody: 85332-4-PBS. Standard: Ag12836. Range: 0.781-100 ng/mL.



Cytometric bead array standard curve of MP02017-2, UBE4B Recombinant Matched Antibody Pair, PBS Only. Capture antibody: 85332-3-PBS. Detection antibody: 85332-5-PBS. Standard: Ag12836. Range: 0.781-100 ng/mL.