

For Research Use Only

# SLC25A19 Recombinant antibody

Catalog Number: 85331-1-RR



## Basic Information

Catalog Number:

85331-1-RR

Concentration:

1000 ug/ml

Source:

Rabbit

Isotype:

IgG

Immunogen Catalog Number:

AG6835

GenBank Accession Number:

BC001075

GeneID (NCBI):

60386

UNIPROT ID:

Q9HC21

Full Name:

solute carrier family 25

(mitochondrial thiamine

pyrophosphate carrier), member 19

Calculated MW:

36 kDa

Observed MW:

37 kDa

Purification Method:

Protein A purification

CloneNo.:

242441B3

Recommended Dilutions:

WB 1:5000-1:50000

## Applications

Tested Applications:

WB, ELISA

Species Specificity:

human, mouse, rat

Positive Controls:

WB : mouse cerebellum tissue, rat cerebellum tissue

## Background Information

### Storage

Storage:

Store at -20°C. Stable for one year after shipment.

Storage Buffer:

PBS with 0.02% sodium azide and 50% glycerol pH 7.3.

Aliquoting is unnecessary for -20°C storage

For technical support and original validation data for this product please contact:

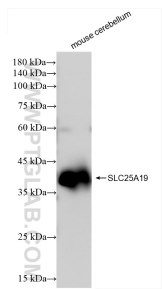
T: 4006900926

E: [Proteintech-CN@ptglab.com](mailto:Proteintech-CN@ptglab.com)

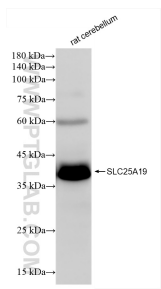
W: [ptgcn.com](http://ptgcn.com)

This product is exclusively available under Proteintech Group brand and is not available to purchase from any other manufacturer.

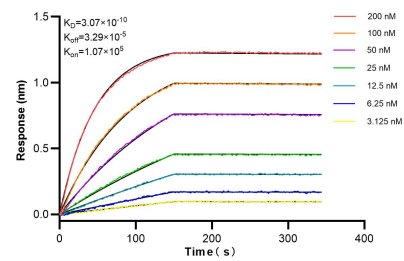
## Selected Validation Data



mouse cerebellum tissue were subjected to SDS PAGE followed by western blot with 85331-1-RR (SLC25A19 antibody) at dilution of 1:10000 incubated at room temperature for 1.5 hours.



rat cerebellum tissue were subjected to SDS PAGE followed by western blot with 85331-1-RR (SLC25A19 antibody) at dilution of 1:10000 incubated at room temperature for 1.5 hours.



Biolayer interferometry (BLI) kinetic assays of 85331-1-RR against Human SLC25A19 were performed. The affinity constant is 0.307 nM.