

For Research Use Only

SLC25A19 Recombinant antibody, PBS Only

Catalog Number: 85331-1-PBS



Basic Information

Catalog Number:

85331-1-PBS

Concentration:

1 mg/ml

Source:

Rabbit

Isotype:

IgG

Immunogen Catalog Number:

AG6835

GenBank Accession Number:

BC001075

GeneID (NCBI):

60386

UNIPROT ID:

Q9HC21

Full Name:

solute carrier family 25

(mitochondrial thiamine

pyrophosphate carrier), member 19

Calculated MW:

36 kDa

Observed MW:

37 kDa

Purification Method:

Protein A purification

CloneNo.:

242441B3

Applications

Tested Applications:

WB, Indirect ELISA

Species Specificity:

human, mouse, rat

Background Information

Storage

Storage:

Store at -80°C.

The product is shipped with ice packs. Upon receipt, store it immediately at -80°C

Storage Buffer:

PBS Only

For technical support and original validation data for this product please contact:

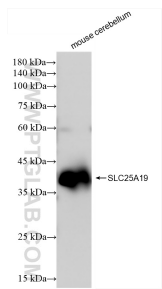
T: 4006900926

E: Proteintech-CN@ptglab.com

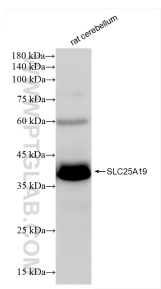
W: ptgcn.com

This product is exclusively available under Proteintech Group brand and is not available to purchase from any other manufacturer.

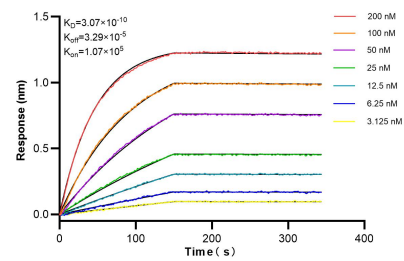
Selected Validation Data



mouse cerebellum tissue were subjected to SDS PAGE followed by western blot with 85331-1-RR (SLC25A19 antibody) at dilution of 1:10000 incubated at room temperature for 1.5 hours. This data was developed using the same antibody clone with 85331-1-PBS in a different storage buffer formulation.



rat cerebellum tissue were subjected to SDS PAGE followed by western blot with 85331-1-RR (SLC25A19 antibody) at dilution of 1:10000 incubated at room temperature for 1.5 hours. This data was developed using the same antibody clone with 85331-1-PBS in a different storage buffer formulation.



Biolayer interferometry (BLI) kinetic assays of 85331-1-RR against Human SLC25A19 were performed. The affinity constant is 0.307 nM.