

For Research Use Only

MRPL3 Recombinant antibody

Catalog Number: 85327-1-RR



Basic Information

Catalog Number: 85327-1-RR	GenBank Accession Number: BC003375	Purification Method: Protein A purification
Concentration: 1000 µg/ml	GeneID (NCBI): 11222	CloneNo.: 242401G9
Source: Rabbit	UNIPROT ID: P09001	Recommended Dilutions: WB: 1:5000-1:50000 IHC: 1:200-1:800
Isotype: IgG	Full Name: mitochondrial ribosomal protein L3	
Immunogen Catalog Number: AG9970	Calculated MW: 39 kDa Observed MW: 35-39 kDa	

Applications

Tested Applications: WB, IHC, ELISA	Positive Controls:
Species Specificity: human	WB : HepG2 cells, A431 cells, HeLa cells, HEK-293T cells IHC : human liver cancer tissue,
Note-IHC: suggested antigen retrieval with TE buffer pH 9.0; (*) Alternatively, antigen retrieval may be performed with citrate buffer pH 6.0	

Background Information

MRPL3, also named as 39S ribosomal protein L3, mitochondrial or RPML3, is a 348 amino acid protein, which belongs to the ribosomal protein L3P family. MRPL3 localizes in the Mitochondrion and has an association with combined oxidative phosphorylation deficiency 9. MRPL3 plays role in the mitochondrial proteins biosynthesis and ribosomal structure and biogenesis.

Storage

Storage:
Store at -20°C. Stable for one year after shipment.
Storage Buffer:
PBS with 0.02% sodium azide and 50% glycerol, pH7.3
Aliquoting is unnecessary for -20°C storage

For technical support and original validation data for this product please contact:

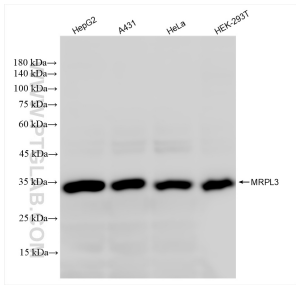
T: 4006900926

E: Proteintech-CN@ptglab.com

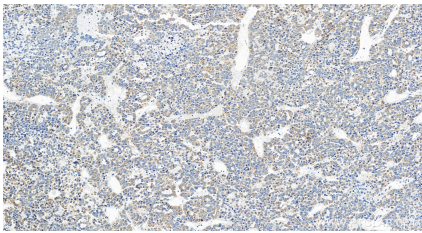
W: ptgcn.com

This product is exclusively available under Proteintech Group brand and is not available to purchase from any other manufacturer.

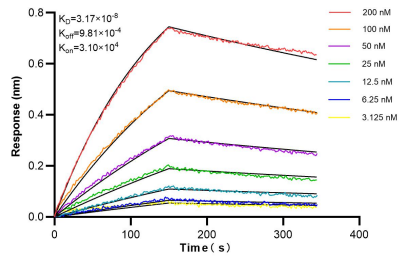
Selected Validation Data



Various lysates were subjected to SDS PAGE followed by western blot with 85327-1-RR (MRPL3 antibody) at dilution of 1:10000 incubated at room temperature for 1.5 hours.



Immunohistochemical analysis of paraffin-embedded human liver cancer tissue slide using 85327-1-RR (MRPL3 antibody) at dilution of 1:400 (under 20x lens). Heat mediated antigen retrieval with Tris-EDTA buffer (pH 9.0).



Biolayer interferometry (BLI) kinetic assays of 85327-1-RR against Human MRPL3 were performed. The affinity constant is 31.7 nM.