

For Research Use Only

# IFN alpha 2B Recombinant monoclonal antibody, PBS Only

Catalog Number:85261-2-PBS



## Basic Information

<b>Catalog Number:</b> 85261-2-PBS	<b>GenBank Accession Number:</b> GeneID (NCBI): 3440	<b>Purification Method:</b> Protein A purification
<b>Source:</b> Rabbit	<b>UNIPROT ID:</b> P01563	<b>CloneNo.:</b> 250407B7
<b>Isotype:</b> IgG	<b>Full Name:</b> interferon, alpha 2	
<b>Immunogen Catalog Number:</b> HZ-1072		

## Applications

**Tested Applications:**  
WB, Indirect ELISA

**Species Specificity:**  
human

## Background Information

Interferon alpha 2 is a type 1 interferon. Interferon alpha 2 is secreted by virus-infected cells and inhibits other cells from further infection. Recombinant human interferon alpha 2 has been approved for therapeutic application in a range of human oncological and viral diseases. Three Interferon alpha 2 subvariants (2A, 2B, 2C) differ by only one or two amino acids at positions 23 and/or 34 of the mature protein (PMID: 25982860; 10672347; 1694761)

## Storage

**Storage:**  
Store at -80°C.  
**The product is shipped with ice packs. Upon receipt, store it immediately at -80°C**

**Storage Buffer:**  
PBS only, pH7.3

For technical support and original validation data for this product please contact:

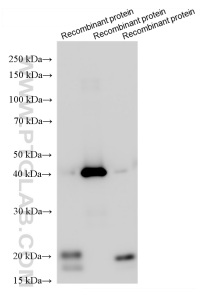
T: 4006900926

E: [Proteintech-CN@ptglab.com](mailto:Proteintech-CN@ptglab.com)

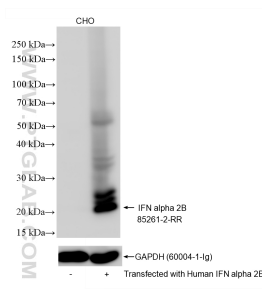
W: [ptgcn.com](http://ptgcn.com)

**This product is exclusively available under Proteintech Group brand and is not available to purchase from any other manufacturer.**

## Selected Validation Data



Human IFN alpha 2 Recombinant protein was subjected to SDS PAGE followed by western blot with 85261-2-RR (IFN alpha 2B antibody) at dilution of 1:2000 incubated at room temperature for 1.5 hours. This data was developed using the same antibody clone with 85261-2-PBS in a different storage buffer formulation.



Human IFN alpha 2 B-transfected CHO cell lysate was subjected to SDS PAGE followed by western blot with 85261-2-RR (IFN alpha 2B antibody) at dilution of 1:2000 incubated at room temperature for 1.5 hours. This data was developed using the same antibody clone with 85261-2-PBS in a different storage buffer formulation.