

For Research Use Only

# Phospho-Cyclin D1 (Thr286) Recombinant monoclonal antibody

Catalog Number: 85246-1-RR



## Basic Information

**Catalog Number:**

85246-1-RR

**Source:**

Rabbit

**Isotype:**

IgG

**GenBank Accession Number:**

BC000076

**GeneID (NCBI):**

595

**UNIPROT ID:**

P24385

**Full Name:**

cyclin D1

**Calculated MW:**

295 aa, 34 kDa

**Observed MW:**

34 kDa

**Purification Method:**

Protein A purification

**CloneNo.:**

242211A1

**Recommended Dilutions:**

WB: 1:2000-1:10000

## Applications

**Tested Applications:**

WB, ELISA

**Species Specificity:**

human, rat

**Positive Controls:**

WB : MG132 treated HT-1080 cells, MG132 treated NIH/3T3 cells

## Background Information

Cyclin D1 is an important regulator of G1-S phase cell cycle transition. Active cyclin D1-cyclin dependent kinase 4/6 complexes phosphorylate retinoblastoma protein, resulting in release of sequestered E2F transcription factors and subsequent expression of genes required for progression into S phase. Cyclin D1 was localized to the nucleus and its rapid ubiquitin-dependent degradation shown to require phosphorylation at Thr286 by glycogen synthase kinase 3 $\beta$  (GSK3 $\beta$ ). (PMID: 16504004)

## Storage

**Storage:**

Store at -20°C. Stable for one year after shipment.

**Storage Buffer:**

PBS with 0.02% sodium azide and 50% glycerol, pH7.3

Aliquoting is unnecessary for -20°C storage

For technical support and original validation data for this product please contact:

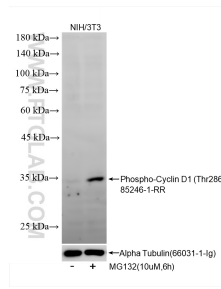
T: 4006900926

E: Proteintech-CN@ptglab.com

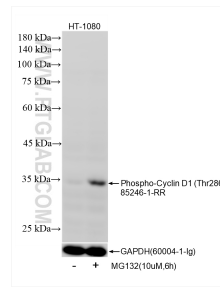
W: ptgcn.com

This product is exclusively available under Proteintech Group brand and is not available to purchase from any other manufacturer.

## Selected Validation Data



Non-treated NIH/3T3 cells and MG132 treated NIH/3T3 cells were subjected to SDS PAGE followed by western blot with 85246-1-RR (Cyclin D1 antibody) at dilution of 1:10000 incubated at room temperature for 1.5 hours. The membrane was stripped and re-blotted with Alpha Tubulin (66031-1-ig) antibody as a loading control.



Non-treated HT-1080 cells and MG132 treated HT-1080 cells were subjected to SDS PAGE followed by western blot with 85246-1-RR (Phospho-Cyclin D1 (Thr286) antibody) at dilution of 1:5000 incubated at room temperature for 1.5 hours. The membrane was stripped and re-blotted with GAPDH (60004-1-ig) antibody as a loading control.