

For Research Use Only

Phospho-Cyclin D1 (Thr286) Recombinant monoclonal antibody, PBS Only

Catalog Number: 85246-1-PBS



Basic Information

Catalog Number: 85246-1-PBS	GenBank Accession Number: BC000076	Purification Method: Protein A purification
Source: Rabbit	GeneID (NCBI): 595	CloneNo.: 242211A1
Isotype: IgG	UNIPROT ID: P24385	
	Full Name: cyclin D1	
	Calculated MW: 295 aa, 34 kDa	
	Observed MW: 34 kDa	

Applications

Tested Applications:
WB, Indirect ELISA

Species Specificity:
human, rat

Background Information

Cyclin D1 is an important regulator of G1-S phase cell cycle transition. Active cyclin D1-cyclin dependent kinase 4/6 complexes phosphorylate retinoblastoma protein, resulting in release of sequestered E2F transcription factors and subsequent expression of genes required for progression into S phase. Cyclin D1 was localized to the nucleus and its rapid ubiquitin-dependent degradation shown to require phosphorylation at Thr286 by glycogen synthase kinase 3 β (GSK3 β). (PMID: 16504004)

Storage

Storage:
Store at -80°C.
The product is shipped with ice packs. Upon receipt, store it immediately at -80°C

Storage Buffer:
PBS only, pH7.3

For technical support and original validation data for this product please contact:

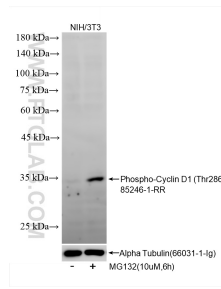
T: 4006900926

E: Proteintech-CN@ptglab.com

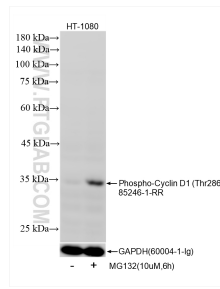
W: ptgcn.com

This product is exclusively available under Proteintech Group brand and is not available to purchase from any other manufacturer.

Selected Validation Data



Non-treated NIH/3T3 cells and MG132 treated NIH/3T3 cells were subjected to SDS PAGE followed by western blot with 85246-1-RR (Cyclin D1 antibody) at dilution of 1:10000 incubated at room temperature for 1.5 hours. The membrane was stripped and re-blotted with Alpha Tubulin (66031-1-Ig) antibody as a loading control. This data was developed using the same antibody clone with 85246-1-PBS in a different storage buffer formulation.



Non-treated HT-1080 cells and MG132 treated HT-1080 cells were subjected to SDS PAGE followed by western blot with 85246-1-RR (Phospho-Cyclin D1 (Thr286) antibody) at dilution of 1:5000 incubated at room temperature for 1.5 hours. The membrane was stripped and re-blotted with GAPDH (60004-1-Ig) antibody as a loading control. This data was developed using the same antibody clone with 85246-1-PBS in a different storage buffer formulation.