

For Research Use Only

WWTR1 Recombinant monoclonal antibody, PBS Only (Detector)

Catalog Number: 85245-3-PBS



Basic Information

Catalog Number: 85245-3-PBS	GenBank Accession Number: NM_001168278.2	Purification Method: Protein A purification
Source: Rabbit	GeneID (NCBI): 25937	CloneNo.: 252185B9
Isotype: IgG	UNIPROT ID: Q9GZV5	
Immunogen Catalog Number: EG6470	Full Name: WW domain containing transcription regulator 1	
	Calculated MW: 44 kDa	

Applications

Tested Applications:
Cytometric bead array, Indirect ELISA

Species Specificity:
human

Background Information

Storage

Storage:
Store at -80°C.
The product is shipped with ice packs. Upon receipt, store it immediately at -80°C

Storage Buffer:
PBS only, pH7.3

For technical support and original validation data for this product please contact:

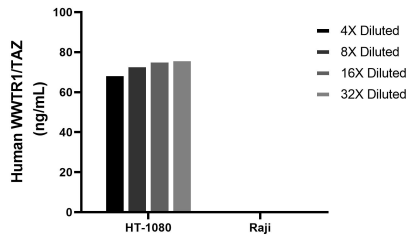
T: 4006900926

E: Proteintech-CN@ptglab.com

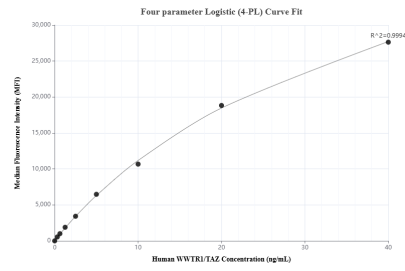
W: ptgcn.com

This product is exclusively available under Proteintech Group brand and is not available to purchase from any other manufacturer.

Selected Validation Data



The mean WWTR1/TAZ concentration was determined to be 73.9 ng/mL in HT-1080 cell extract based on a 1.2 mg/mL extract load, Raji cell extract were served as a negative control.



Cytometric bead array standard curve of MP02851-1, WWTR1/TAZ Recombinant Matched Antibody Pair, PBS Only. Capture antibody: 85245-4-PBS. Detection antibody: 85245-3-PBS. Standard: Eg6470. Range: 0.312-40 ng/mL.