

For Research Use Only

PRAS40 Recombinant monoclonal antibody

Catalog Number: 85244-4-RR



Basic Information

Catalog Number: 85244-4-RR	GenBank Accession Number: BC051844	Purification Method: Protein A purification
Source: Rabbit	GeneID (NCBI): 84335	CloneNo.: 252230F12
Isotype: IgG	UNIPROT ID: Q96B36	Recommended Dilutions: WB: 1:1000-1:4000
Immunogen Catalog Number: AG35446	Full Name: AKT1 substrate 1 (proline-rich)	
	Calculated MW: 27 kDa	
	Observed MW: 40 kDa	

Applications

Tested Applications:
WB, ELISA

Species Specificity:
human, mouse

Positive Controls:
WB : HeLa cells, HepG2 cells, L02 cells, MCF-7 cells, A549 cells, NIH/3T3 cells, C6 cells

Background Information

PRAS40 (40 kDa proline-rich AKT substrate) is also named as AKT1S1 (Proline-rich AKT1 substrate 1). PRAS40 is a substrate of Akt and a component of the mammalian target of rapamycin complex 1 (mTORC1) (PMID: 28978182). Locating at the crossroad of the PI3K/Akt pathway and the mTOR pathway, PRAS40 is phosphorylated by growth factors or other stimuli, and regulates the activation of these signaling pathways in turn (PMID: 28978182). PRAS40 is expressed in a variety of tissues in vivo and has multiple phosphorylation sites, which its activity is closely related to phosphorylation. Studies have shown that PRAS40 is involved in regulating cell growth, cell apoptosis, oxidative stress, autophagy and angiogenesis, as well as various of signalling pathways such as mammalian target of mammalian target rapamycin (mTOR), protein kinase B (PKB/Akt), nuclear factor kappa-B(NF- κ B) proto-oncogene serine/threonine-protein kinase PIM-1(PIM1) and pyruvate kinase M2 (PKM2) (PMID: 33504218).

Storage

Storage:
Store at -20°C. Stable for one year after shipment.

Storage Buffer:
PBS with 0.02% sodium azide and 50% glycerol, pH7.3

Aliquoting is unnecessary for -20°C storage

For technical support and original validation data for this product please contact:

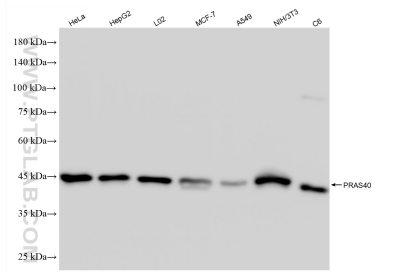
T: 4006900926

E: Proteintech-CN@ptglab.com

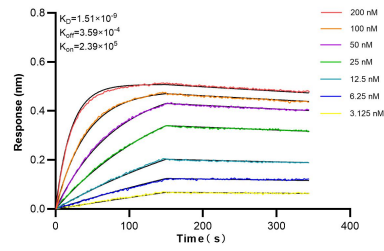
W: ptgcn.com

This product is exclusively available under Proteintech Group brand and is not available to purchase from any other manufacturer.

Selected Validation Data



Various lysates were subjected to SDS PAGE followed by western blot with 85244-4-RR (PRAS40 antibody) at dilution of 1:2000 incubated at room temperature for 1.5 hours.



Biolayer interferometry (BLI) kinetic assays of 85244-4-RR against Human PRAS40 were performed. The affinity constant is 1.51 nM.