

For Research Use Only

Phospho-PDPK1 (Ser241) Recombinant monoclonal antibody, PBS Only

Catalog Number: 85223-3-PBS



Basic Information

Catalog Number:

85223-3-PBS

Source:

Rabbit

Isotype:

IgG

GenBank Accession Number:

BC012103

GeneID (NCBI):

5170

UNIPROT ID:

O15530

Full Name:

3-phosphoinositide dependent protein kinase-1

Calculated MW:

556 aa, 63 kDa

Observed MW:

58-68 kDa

Purification Method:

Protein A purification

CloneNo.:

250623A11

Applications

Tested Applications:

WB, FC (Intra), Indirect ELISA

Species Specificity:

human, mouse

Background Information

3-Phosphoinositide dependent protein kinase-1 (PDK1 or PDPK1) is a serine-threonine kinase belonging to AGC kinase family. PDK1 plays a critical role in establishing ACD (Asymmetric cell division) in the epithelium (PMID: 27184845). The kinase activity of PDK1 depends on phosphatidylinositol 3-kinase (PI3K), a key intermediate in signaling pathways including those from growth factor receptors and adhesion molecules. Substrates of PDK1, including AKT and the protein kinase C (PKC) isozymes, regulate a number of essential cell functions (PMID: 20027184). PDPK1 has 5 isoforms produced by alternative splicing of 48-63 kDa and is detected as 60-63 kDa.

Storage

Storage:

Store at -80°C.

The product is shipped with ice packs. Upon receipt, store it immediately at -80°C

Storage Buffer:

PBS only, pH7.3

For technical support and original validation data for this product please contact:

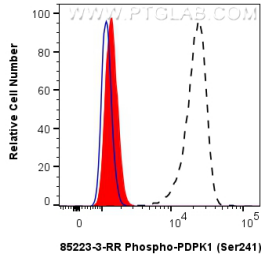
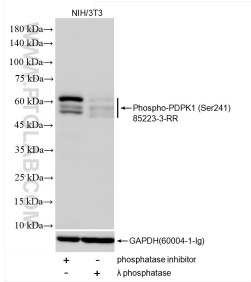
T: 4006900926

E: Proteintech-CN@ptglab.com

W: ptgcn.com

This product is exclusively available under Proteintech Group brand and is not available to purchase from any other manufacturer.

Selected Validation Data



Non-treated NIH/3T3 cells, phosphatase inhibitor treated NIH/3T3 cells and λ phosphatase treated NIH/3T3 cells were subjected to SDS PAGE followed by western blot with 85223-3-RR (Phospho-PDPK1 (Ser241) antibody) at dilution of 1:3000 incubated at room temperature for 1.5 hours. The membrane was stripped and re-blotted with GAPDH (60004-1-Ig) antibody as a loading control. This data was developed using the same antibody clone with 85223-3-

1X10⁶ NIH/3T3 cells untreated (dashed lines) or treated with λ phosphatase which intracellularly stained with 0.13 ug Phospho-PDPK1 (Ser241) Recombinant monoclonal antibody (85223-3-RR, Clone:250623A11) and CoraLite® 488-Conjugated Goat Anti-Rabbit IgG(H+L) (SA00013-2)(red), or 0.13 ug Rabbit IgG Isotype Control RecAb (98136-1-RR, Clone: 240953C9) (blue). Cells were fixed and permeabilized with Flow Cytometry Phosphorylated Protein