

For Research Use Only

# PPME1 Recombinant antibody

Catalog Number: 85221-5-RR



## Basic Information

Catalog Number:

85221-5-RR

Concentration:

1000  $\mu$ g/ml

Source:

Rabbit

Isotype:

IgG

Immunogen Catalog Number:

AG5817

GenBank Accession Number:

BC050705

GeneID (NCBI):

51400

UNIPROT ID:

Q9Y570

Full Name:

protein phosphatase methyltransferase

1

Calculated MW:

42 kDa

Observed MW:

44 kDa

Purification Method:

Protein A purification

CloneNo.:

242929H5

Recommended Dilutions:

WB 1:2000-1:10000

## Applications

Tested Applications:

WB, ELISA

Species Specificity:

human, mouse, rat

Positive Controls:

WB : HeLa cells, A549 cells, MCF-7 cells, K-562 cells, mouse brain tissue, rat brain tissue

## Background Information

PPME1 (Protein phosphatase methyltransferase 1) is a protein phosphatase 2A (PP2A)-specific methyl transferase that negatively regulates PP2A through demethylation at its carboxy terminal leucine 309 residue (PMID: 24253382). PPME1 plays an important role in the development of cancers and may be a biomarker for pancreatic carcinoma, gastric and lung cancer (PMID: 32351291).

## Storage

Storage:

Store at -20°C. Stable for one year after shipment.

Storage Buffer:

PBS with 0.02% sodium azide and 50% glycerol pH 7.3.

Aliquoting is unnecessary for -20°C storage

For technical support and original validation data for this product please contact:

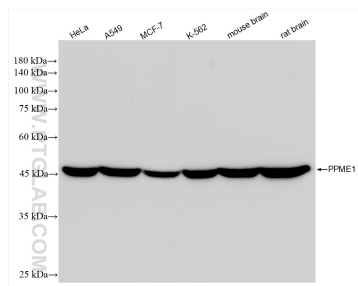
T: 4006900926

E: [Proteintech-CN@ptglab.com](mailto:Proteintech-CN@ptglab.com)

W: [ptgcn.com](http://ptgcn.com)

This product is exclusively available under Proteintech Group brand and is not available to purchase from any other manufacturer.

## Selected Validation Data



Various lysates were subjected to SDS PAGE followed by western blot with 85221-5-RR (PPME1 antibody) at dilution of 1:5000 incubated at room temperature for 1.5 hours.