

For Research Use Only

# Rat MMP8 Recombinant antibody, PBS Only (Detector)

Catalog Number: 85211-5-PBS



## Basic Information

Catalog Number:

85211-5-PBS

Concentration:

1 mg/ml

Source:

Rabbit

Isotype:

IgG

GenBank Accession Number:

NM\_022221.1

GeneID (NCBI):

63849

UNIPROT ID:

O88766

Full Name:

matrix metalloproteinase 8

Calculated MW:

53 kDa

Purification Method:

Protein A purification

CloneNo.:

242473D1

## Applications

Tested Applications:

Sandwich ELISA, Indirect ELISA, Sample test

Species Specificity:

rat

## Background Information

### Storage

Storage:

Store at -80°C.

The product is shipped with ice packs. Upon receipt, store it immediately at -80°C

Storage Buffer:

PBS Only

For technical support and original validation data for this product please contact:

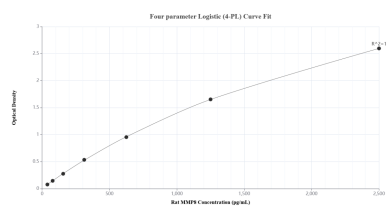
T: 4006900926

E: [Proteintech-CN@ptglab.com](mailto:Proteintech-CN@ptglab.com)

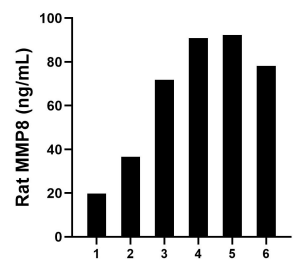
W: [ptgcn.com](http://ptgcn.com)

This product is exclusively available under Proteintech Group brand and is not available to purchase from any other manufacturer.

## Selected Validation Data



Sandwich ELISA standard curve of MP01911-3, Rat MMP8 Recombinant Matched Antibody Pair - PBS only. 85211-6-PBS was coated to a plate as the capture antibody and incubated with serial dilutions of standard Eg3278. 85211-5-PBS was HRP conjugated as the detection antibody. Range: 39.1-2500 pg/mL.



Serum of six rats was measured. The MMP8 concentration of detected samples was determined to be 65.0 ng/mL with a range of 19.8-92.4 ng/mL.