

For Research Use Only

# KCTD5 Recombinant antibody

Catalog Number: 85210-4-RR



## Basic Information

Catalog Number:

85210-4-RR

Concentration:

1000 µg/ml

Source:

Rabbit

Isotype:

IgG

Immunogen Catalog Number:

AG7915

GenBank Accession Number:

BC007314

GeneID (NCBI):

54442

UNIPROT ID:

Q9NXV2

Full Name:

potassium channel tetramerisation

domain containing 5

Calculated MW:

26 kDa

Purification Method:

Protein A purification

CloneNo.:

242864A11

Recommended Dilutions:

IF/ICC 1:200-1:800

## Applications

Tested Applications:

IF/ICC, ELISA

Species Specificity:

human

Positive Controls:

IF/ICC : HeLa cells,

## Background Information

KCTD5 belongs to the human potassium (K<sup>+</sup>) channel tetramerization domain (KCTD) family of proteins which share sequence similarity with the cytoplasmic domain of voltage-gated K<sup>+</sup> channels (Kv channels). The KCTD proteins have relatively conserved N-terminal domains and variable C-termini (PMID: 24268103). KCTD5 interacts with cullin3 and has been proposed to function as substrate adapter for cullin3 based ubiquitin E3 ligases (PMID: 26188516).

## Storage

Storage:

Store at -20°C. Stable for one year after shipment.

Storage Buffer:

PBS with 0.02% sodium azide and 50% glycerol pH 7.3.

Aliquoting is unnecessary for -20°C storage

For technical support and original validation data for this product please contact:

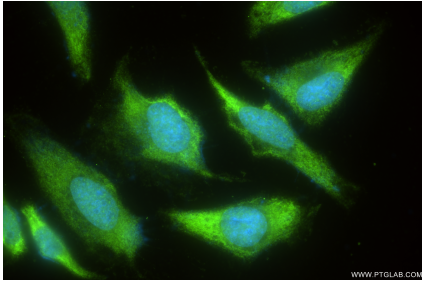
T: 4006900926

E: [Proteintech-CN@ptglab.com](mailto:Proteintech-CN@ptglab.com)

W: [ptgcn.com](http://ptgcn.com)

This product is exclusively available under Proteintech Group brand and is not available to purchase from any other manufacturer.

## Selected Validation Data



Immunofluorescent analysis of (-20°C Ethanol) fixed HeLa cells using KCTD5 antibody (85210-4-RR, Clone: 242864A11 ) at dilution of 1:400 and CoraLite®488-Conjugated Goat Anti-Rabbit IgG(H+L) (SA00013-2).