

For Research Use Only

CPSF7 Recombinant antibody, PBS Only (Detector)

Catalog Number: 85203-2-PBS



Basic Information

Catalog Number:

85203-2-PBS

Concentration:

1 mg/ml

Source:

Rabbit

Isotype:

IgG

GenBank Accession Number:

NM_001136040

GeneID (NCBI):

79869

UNIPROT ID:

Q8N684

Full Name:

pre-mRNA cleavage factor I, 59 kDa subunit

Calculated MW:

56 kDa

Purification Method:

Protein A purification

CloneNo.:

242644F11

Applications

Tested Applications:

Sandwich ELISA, Indirect ELISA, Sample test

Species Specificity:

human

Background Information

Storage

Storage:

Store at -80°C.

The product is shipped with ice packs. Upon receipt, store it immediately at -80°C

Storage Buffer:

PBS Only

For technical support and original validation data for this product please contact:

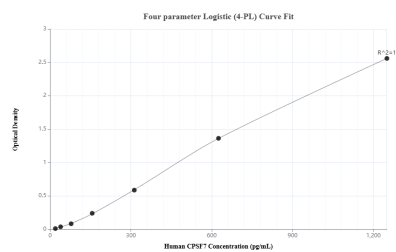
T: 4006900926

E: Proteintech-CN@ptglab.com

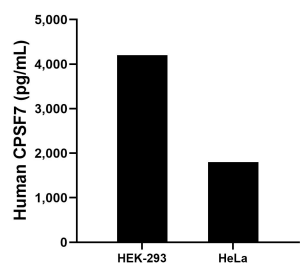
W: ptgcn.com

This product is exclusively available under Proteintech Group brand and is not available to purchase from any other manufacturer.

Selected Validation Data



Sandwich ELISA standard curve of MP01956-1, Human CPSF7 Recombinant Matched Antibody Pair - PBS only. 85203-1-PBS was coated to a plate as the capture antibody and incubated with serial dilutions of standard SY01255. 85203-2-PBS was HRP conjugated as the detection antibody. Range: 19.5-1250 pg/mL



The mean CPSF7 concentration was determined to be 4,199.1 pg/mL in HEK-293 cell extract based on a 2.7 mg/mL extract load and 1,800.3 pg/mL in HeLa cell extract based on a 1.5 mg/mL extract load.