

For Research Use Only

Filamin B Recombinant antibody, PBS Only (Capture)

Catalog Number: 85202-2-PBS



Basic Information

Catalog Number:

85202-2-PBS

Concentration:

1 mg/ml

Source:

Rabbit

Isotype:

IgG

GenBank Accession Number:

NM_001457

GeneID (NCBI):

2317

UNIPROT ID:

O75369

Full Name:

filamin B, beta (actin binding protein 278)

Calculated MW:

278 kDa

Purification Method:

Protein A purification

CloneNo.:

242275E7

Applications

Tested Applications:

Sandwich ELISA, Indirect ELISA, Sample test

Species Specificity:

human

Background Information

Storage

Storage:

Store at -80°C.

The product is shipped with ice packs. Upon receipt, store it immediately at -80°C

Storage Buffer:

PBS Only

For technical support and original validation data for this product please contact:

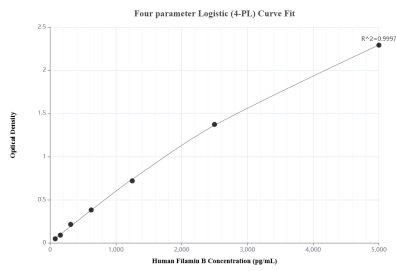
T: 4006900926

E: Proteintech-CN@ptglab.com

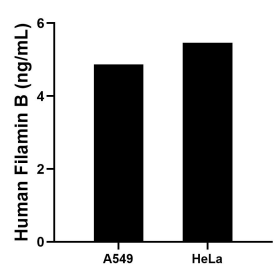
W: ptgcn.com

This product is exclusively available under Proteintech Group brand and is not available to purchase from any other manufacturer.

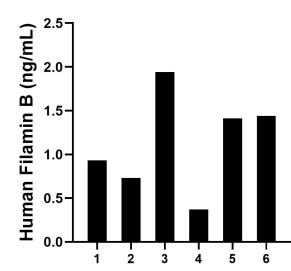
Selected Validation Data



Sandwich ELISA standard curve of MP01960-1, Human Filamin B Recombinant Matched Antibody Pair - PBS only. 85202-2-PBS was coated to a plate as the capture antibody and incubated with serial dilutions of standard SY00901. 85202-1-PBS was HRP conjugated as the detection antibody. Range: 78.1-5000 pg/mL



The mean Filamin B concentration was determined to be 4.9 ng/mL in A549 cell extract based on a 2.6 mg/mL extract load and 5.5 ng/mL in HeLa cell extract based on a 1.5 mg/mL extract load.



Serum of six individual healthy human donors was measured. The Filamin B concentration of detected samples was determined to be 1.1 ng/mL with a range of 0.4-1.9 ng/mL.