

For Research Use Only

GREB1 Recombinant antibody, PBS Only

Catalog Number: 85189-4-PBS



Basic Information

Catalog Number:

85189-4-PBS

Concentration:

1 mg/ml

Source:

Rabbit

Isotype:

IgG

Immunogen Catalog Number:

AG29908

GenBank Accession Number:

NM_014668

GeneID (NCBI):

9687

UNIPROT ID:

Q4ZG55

Full Name:

GREB1 protein

Calculated MW:

216 kDa

Observed MW:

216-240 kDa

Purification Method:

Protein A purification

CloneNo.:

242882D11

Applications

Tested Applications:

WB, Indirect ELISA

Species Specificity:

human

Background Information

GREB1 (Gene regulated by estrogen in breast cancer protein1) encodes a 1949-amino acid protein that contains an N-terminal Zn-binding domain followed by a circularly permuted catalytically inactive superfamily II helicase domain and a C-terminal Fringe-like GT domain. GREB1 is an early estrogen-responsive gene, and its expression is correlated with estrogen levels in breast cancer patients. GREB1 is implicated in hormone-dependent cancers, such as ovarian, prostate cancer and as a risk factor in endometriosis and variations in bone mineral density.

Storage

Storage:

Store at -80°C.

The product is shipped with ice packs. Upon receipt, store it immediately at -80°C

Storage Buffer:

PBS Only

For technical support and original validation data for this product please contact:

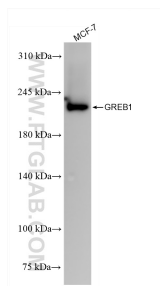
T: 4006900926

E: Proteintech-CN@ptglab.com

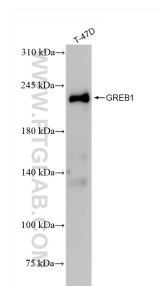
W: ptgcn.com

This product is exclusively available under Proteintech Group brand and is not available to purchase from any other manufacturer.

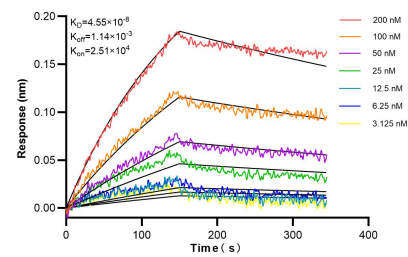
Selected Validation Data



MCF-7 cells were subjected to SDS PAGE followed by western blot with 85189-4-RR (GREB1 antibody) at dilution of 1:10000 incubated at room temperature for 1.5 hours. This data was developed using the same antibody clone with 85189-4-PBS in a different storage buffer formulation.



T-47D cells were subjected to SDS PAGE followed by western blot with 85189-4-RR (GREB1 antibody) at dilution of 1:10000 incubated at room temperature for 1.5 hours. This data was developed using the same antibody clone with 85189-4-PBS in a different storage buffer formulation.



Biolayer interferometry (BLI) kinetic assays of 85189-4-RR against Human GREB1 were performed. The affinity constant is 45.5 nM.