

For Research Use Only

GREB1 Recombinant antibody, PBS Only (Detector)

Catalog Number: 85189-1-PBS



Basic Information

Catalog Number:

85189-1-PBS

Concentration:

1 mg/ml

Source:

Rabbit

Isotype:

IgG

Immunogen Catalog Number:

AG29908

GenBank Accession Number:

NM_014668

GeneID (NCBI):

9687

UNIPROT ID:

Q4ZG55

Full Name:

GREB1 protein

Calculated MW:

216 kDa

Purification Method:

Protein A purification

CloneNo.:

242882A3

Applications

Tested Applications:

Cytometric bead array, Sandwich ELISA, Indirect ELISA,
Sample test

Species Specificity:

human

Background Information

Storage

Storage:

Store at -80°C.

The product is shipped with ice packs. Upon receipt, store it immediately at -80°C

Storage Buffer:

PBS Only

For technical support and original validation data for this product please contact:

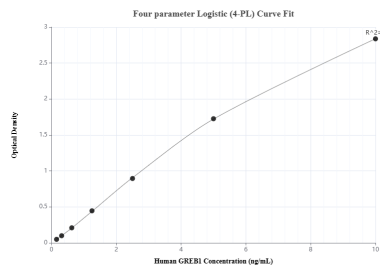
T: 4006900926

E: Proteintech-CN@ptglab.com

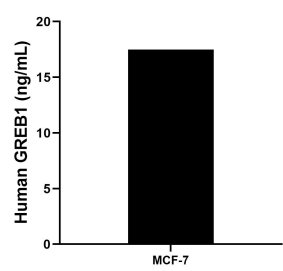
W: ptgcn.com

This product is exclusively available under Proteintech Group brand and is not available to purchase from any other manufacturer.

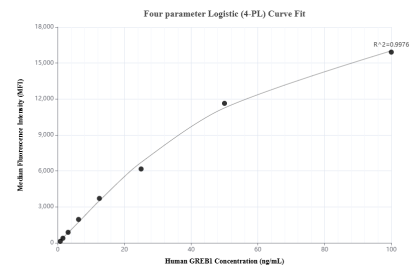
Selected Validation Data



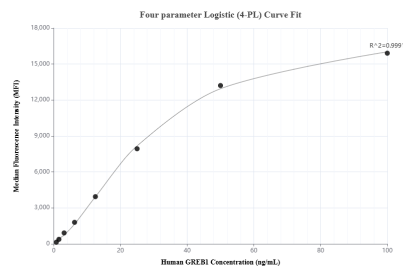
Sandwich ELISA standard curve of MP01893-3, Human GREB1 Recombinant Matched Antibody Pair - PBS only. 85189-2-PBS was coated to a plate as the capture antibody and incubated with serial dilutions of standard Ag29908. 85189-1-PBS was HRP conjugated as the detection antibody. Range: 0.156-10 ng/mL



The mean GREB1 concentration was determined to be 17.48 ng/mL in MCF-7 cell extract based on a 3.5 mg/mL extract load.



Cytometric bead array standard curve of MP01893-2, GREB1 Recombinant Matched Antibody Pair, PBS Only. Capture antibody: 85189-2-PBS. Detection antibody: 85189-1-PBS. Standard: Ag29908. Range: 0.781-100 ng/mL



Cytometric bead array standard curve of MP01893-1, GREB1 Recombinant Matched Antibody Pair, PBS Only. Capture antibody: 85189-3-PBS. Detection antibody: 85189-1-PBS. Standard: Ag29908. Range: 0.781-100 ng/mL