

For Research Use Only

NSMCE2 Recombinant antibody

Catalog Number: 85188-4-RR



Basic Information

Catalog Number:

85188-4-RR

Concentration:

1000 µg/ml

Source:

Rabbit

Isotype:

IgG

Immunogen Catalog Number:

AG4545

GenBank Accession Number:

BC032797

GeneID (NCBI):

286053

UNIPROT ID:

Q96MF7

Full Name:

non-SMC element 2, MMS21 homolog
(S. cerevisiae)

Calculated MW:

247 aa, 28 kDa

Observed MW:

28-32 kDa

Purification Method:

Protein A purification

CloneNo.:

242862D8

Recommended Dilutions:

WB 1:5000-1:50000

IF/ICC 1:250-1:1000

Applications

Tested Applications:

WB, IF/ICC, ELISA

Species Specificity:

human

Positive Controls:

WB : HeLa cells, Jurkat cells, K-562 cells, A549 cells,
U2OS cells

IF/ICC : U2OS cells,

Background Information

NSMCE2 (E3 SUMO-protein ligase NSE2) has a C-terminal Siz/PIAS-RING (SP-RING) domain with E3 SUMO ligase activity (PMID: 15601841). NSMCE2, an essential SUMO ligase of the SMC5/6 complex suppresses cancer and aging in mice (PMID: 26443207).

Storage

Storage:

Store at -20°C. Stable for one year after shipment.

Storage Buffer:

PBS with 0.02% sodium azide and 50% glycerol pH 7.3.

Aliquoting is unnecessary for -20°C storage

For technical support and original validation data for this product please contact:

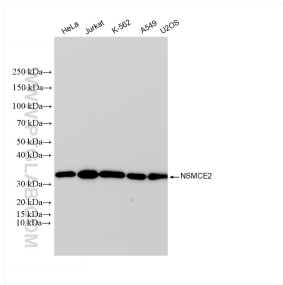
T: 4006900926

E: Proteintech-CN@ptglab.com

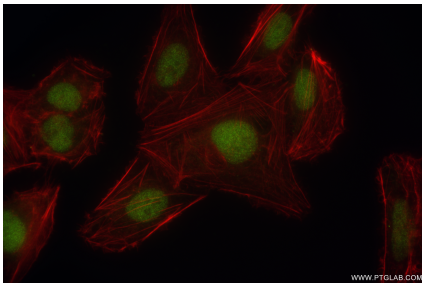
W: ptgcn.com

This product is exclusively available under Proteintech Group brand and is not available to purchase from any other manufacturer.

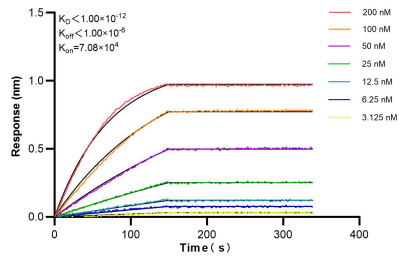
Selected Validation Data



Various lysates were subjected to SDS PAGE followed by western blot with 85188-4-RR (NSMCE2 antibody) at dilution of 1:10000 incubated at room temperature for 1.5 hours.



Immunofluorescent analysis of (4% PFA) fixed U2OS cells using NSMCE2 antibody (85188-4-RR, Clone: 242862D8) at dilution of 1:500 and CoraLite® 488-Conjugated Goat Anti-Rabbit IgG(H+L) (SA00013-2), CL594-Phalloidin (red).



Biolayer interferometry (BLI) kinetic assays of 85188-4-RR against Human NSMCE2 were performed. The affinity constant is below 1 pM.