

For Research Use Only

NSMCE2 Recombinant antibody, PBS Only (Capture)

Catalog Number: 85188-4-PBS



Basic Information

Catalog Number:	85188-4-PBS	GenBank Accession Number:	BC032797	Purification Method:	Protein A purification
Concentration:	1 mg/ml	GeneID (NCBI):	286053	CloneNo.:	242862D8
Source:	Rabbit	UNIPROT ID:	Q96MF7		
Isotype:	IgG	Full Name:	non-SMC element 2, MMS21 homolog (S. cerevisiae)		
Immunogen Catalog Number:	AG4545	Calculated MW:	247 aa, 28 kDa		
		Observed MW:	28-32 kDa		

Applications

Tested Applications:
WB, IF/ICC, Sandwich ELISA, Indirect ELISA, Sample test

Species Specificity:
human

Background Information

NSMCE2 (E3 SUMO-protein ligase NSE2) has a C-terminal Siz/PIAS-RING (SP-RING) domain with E3 SUMO ligase activity (PMID: 15601841). NSMCE2, an essential SUMO ligase of the SMC5/6 complex suppresses cancer and aging in mice (PMID: 26443207).

Storage

Storage:
Store at -80°C.
The product is shipped with ice packs. Upon receipt, store it immediately at -80°C

Storage Buffer:
PBS Only

For technical support and original validation data for this product please contact:

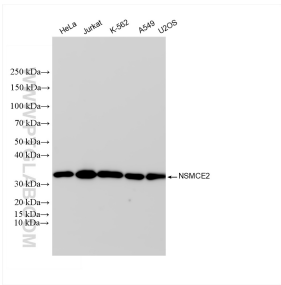
T: 4006900926

E: Proteintech-CN@ptglab.com

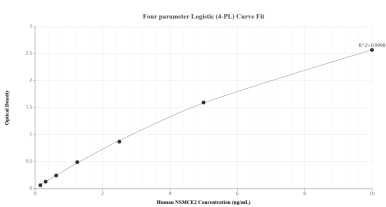
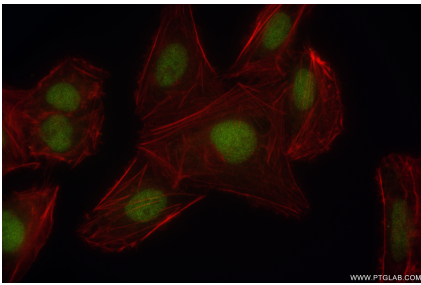
W: ptgcn.com

This product is exclusively available under Proteintech Group brand and is not available to purchase from any other manufacturer.

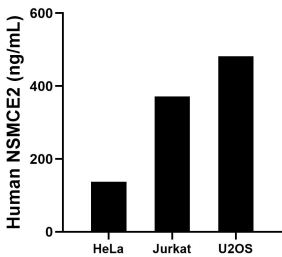
Selected Validation Data



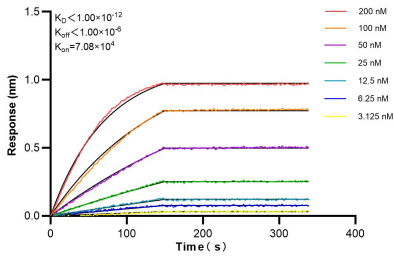
Various lysates were subjected to SDS PAGE followed by western blot with 85188-4-RR (NSMCE2 antibody) at dilution of 1:10000 incubated at room temperature for 1.5 hours. This data was developed using the same antibody clone with 85188-4-PBS in a different storage buffer formulation.



Sandwich ELISA standard curve of MP01897-2, Human NSMCE2 Recombinant Matched Antibody Pair - PBS only. 85188-4-PBS was coated to a plate as the capture antibody and incubated with serial dilutions of standard Ag4545. 85188-5-PBS was HRP conjugated as the detection antibody. Range: 0.156-10 ng/mL



The mean NSMCE2 concentration was determined to be 137.24 ng/mL in HeLa cell extract based on a 1.50 mg/mL extract load, 371.47 ng/mL in Jurkat cell extract based on a 1.90 mg/mL extract load and 481.66 ng/mL in U2OS cell extract based on a 3.50 mg/mL extract load.



Bioluminescence resonance transfer (BLI) kinetic assays of 85188-4-RR against Human NSMCE2 were performed. The affinity constant is below 1 pM.