

For Research Use Only

EPS8 Recombinant antibody

Catalog Number: 85184-5-RR



Basic Information

Catalog Number:

85184-5-RR

Concentration:

1000 ug/ml

Source:

Rabbit

Isotype:

IgG

Immunogen Catalog Number:

AG3121

GenBank Accession Number:

BC030010

GeneID (NCBI):

2059

UNIPROT ID:

Q12929

Full Name:

epidermal growth factor receptor

pathway substrate 8

Calculated MW:

822 aa, 92 kDa

Observed MW:

97 kDa

Purification Method:

Protein A purification

CloneNo.:

242835G12

Recommended Dilutions:

WB 1:5000-1:50000

Applications

Tested Applications:

WB, ELISA

Species Specificity:

human, mouse

Positive Controls:

WB : NIH/3T3 cells, C2C12 cells

Background Information

Epidermal growth factor receptor Pathway Substrate 8 (EPS8) is a crucial regulator of the actin cytoskeleton dynamics accompanying cell motility and invasion. This protein contains one PH domain and one SH3 domain leading to its binding activity with multiple cellular targets. EPS8 can function as a unique actin capping protein specifically required for dendritic cell migration and plays roles in the regulation of axonal filopodia in neuronal development and synapse formation. The EPS8 gene may contribute to the development of a subset of colorectal cancers and could have applications in diagnosis and treatment.

Storage

Storage:

Store at -20°C. Stable for one year after shipment.

Storage Buffer:

PBS with 0.02% sodium azide and 50% glycerol, pH7.3

Aliquoting is unnecessary for -20°C storage

For technical support and original validation data for this product please contact:

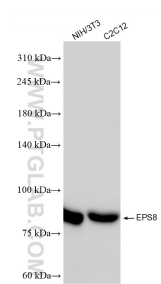
T: 4006900926

E: Proteintech-CN@ptglab.com

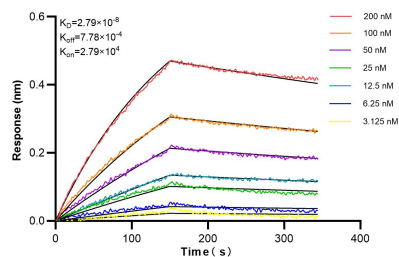
W: ptgcn.com

This product is exclusively available under Proteintech Group brand and is not available to purchase from any other manufacturer.

Selected Validation Data



NIH/3T3 cells were subjected to SDS PAGE followed by western blot with 85184-5-RR (EPS8 antibody) at dilution of 1:10000 incubated at room temperature for 1.5 hours.



Biolayer interferometry (BLI) kinetic assays of 85184-5-RR against Human EPS8 were performed. The affinity constant is 27.9 nM.