

For Research Use Only

# Glycophorin A/CD235a Recombinant antibody, PBS Only (Detector)

Catalog Number: 85182-3-PBS



## Basic Information

Catalog Number:	85182-3-PBS	GenBank Accession Number:	BC005319	Purification Method:	Protein A purification
Concentration:	1 mg/ml	GeneID (NCBI):	2993	CloneNo.:	242822H5
Source:	Rabbit	UNIPROT ID:	P02724		
Isotype:	IgG	Full Name:	glycophorin A (MNS blood group)		
Immunogen Catalog Number:	EG2336	Calculated MW:	150 aa, 16 kDa		

## Applications

**Tested Applications:**  
IHC, Cytometric bead array, Indirect ELISA

**Species Specificity:**  
human

## Background Information

Glycophorin A (GYPA), also known as CD235a, is the major transmembrane sialoglycoprotein in erythrocytes. It is a dimeric type I transmembrane protein carrying 15 closely clustered O-linked tetrasaccharides capped with sialic acid/N-acetylneuraminic acid (Neu5Ac). Glycophorin A represents the major sialoglycoprotein of the red blood cell membrane displaying about one million copies per cell. (PMID: 9490702)

## Storage

**Storage:**  
Store at -80°C.  
**The product is shipped with ice packs. Upon receipt, store it immediately at -80°C**

**Storage Buffer:**  
PBS only, pH7.3

For technical support and original validation data for this product please contact:

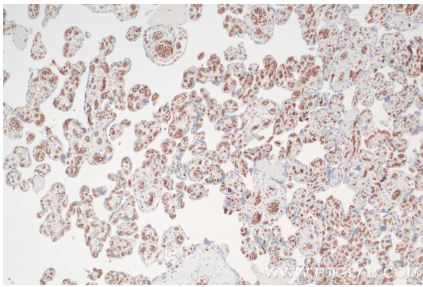
T: 4006900926

E: [Proteintech-CN@ptglab.com](mailto:Proteintech-CN@ptglab.com)

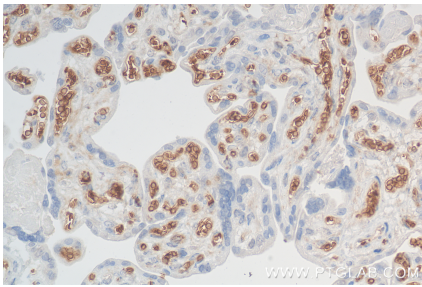
W: [ptgcn.com](http://ptgcn.com)

**This product is exclusively available under Proteintech Group brand and is not available to purchase from any other manufacturer.**

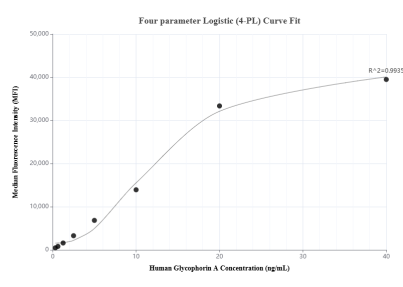
Selected Validation Data



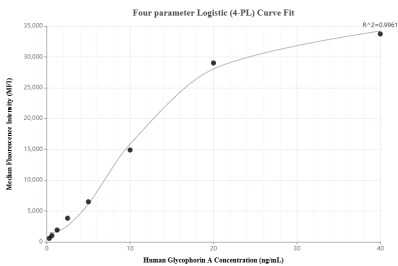
Immunohistochemical analysis of paraffin-embedded human placenta tissue slide using 85182-3-RR (GYPA antibody) at dilution of 1:1000 (under 10x lens). Heat mediated antigen retrieval with Tris-EDTA buffer (pH 9.0). This data was developed using the same antibody clone with 85182-3-PBS in a different storage buffer formulation.



Immunohistochemical analysis of paraffin-embedded human placenta tissue slide using 85182-3-RR (GYPA antibody) at dilution of 1:1000 (under 40x lens). Heat mediated antigen retrieval with Tris-EDTA buffer (pH 9.0). This data was developed using the same antibody clone with 85182-3-PBS in a different storage buffer formulation.



Cytometric bead array standard curve of MP01888-1, Glycophorin A Recombinant Matched Antibody Pair, PBS Only. Capture antibody: 85182-2-PBS. Detection antibody: 85182-3-PBS. Standard: Eg2336. Range: 0.313-40 ng/mL.



Cytometric bead array standard curve of MP01888-2, Glycophorin A Recombinant Matched Antibody Pair, PBS Only. Capture antibody: 85182-1-PBS. Detection antibody: 85182-3-PBS. Standard: Eg2336. Range: 0.313-40 ng/mL.