

For Research Use Only

Glycophorin A/CD235a Recombinant monoclonal antibody

Catalog Number: 85182-1-RR



Basic Information

Catalog Number: 85182-1-RR	GenBank Accession Number: BC005319	Purification Method: Protein A purification
Source: Rabbit	GeneID (NCBI): 2993	CloneNo.: 242822C9
Isotype: IgG	UNIPROT ID: P02724	Recommended Dilutions: WB: 1:5000-1:50000 IHC: 1:10000-1:40000
Immunogen Catalog Number: EG2336	Full Name: glycophorin A (MNS blood group)	
	Calculated MW: 150 aa, 16 kDa	
	Observed MW: 35-38 kDa	

Applications

Tested Applications: WB, IHC, ELISA	Positive Controls:
Species Specificity: human	WB : human placenta tissue, IHC : human placenta tissue,
Note-IHC: suggested antigen retrieval with TE buffer pH 9.0; (*) Alternatively, antigen retrieval may be performed with citrate buffer pH 6.0	

Background Information

Glycophorin A (GYPA), also known as CD235a, is the major transmembrane sialoglycoprotein in erythrocytes. It is a dimeric type I transmembrane protein carrying 15 closely clustered O-linked tetrasaccharides capped with sialic acid/N-acetylneuraminic acid (Neu5Ac). Glycophorin A represents the major sialoglycoprotein of the red blood cell membrane displaying about one million copies per cell. (PMID: 9490702)

Storage

Storage:
Store at -20°C. Stable for one year after shipment.
Storage Buffer:
PBS with 0.02% sodium azide and 50% glycerol, pH7.3
Aliquoting is unnecessary for -20°C storage

For technical support and original validation data for this product please contact:

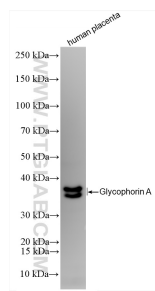
T: 4006900926

E: Proteintech-CN@ptglab.com

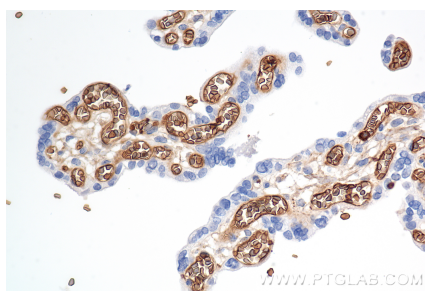
W: ptgcn.com

This product is exclusively available under Proteintech Group brand and is not available to purchase from any other manufacturer.

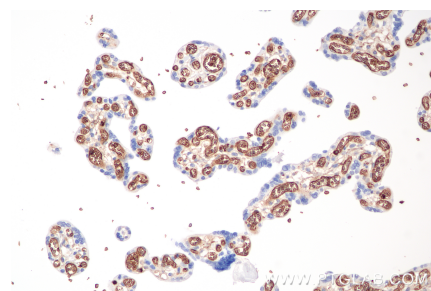
Selected Validation Data



Human placenta tissue was subjected to SDS PAGE, followed by western blot with 85182-1-RR (GYPA antibody) at a dilution of 1:10000 incubated at room temperature for 1.5 hours.



Immunohistochemical analysis of paraffin-embedded human placenta tissue slide using 85182-1-RR (Glycophorin A/CD235a antibody) at dilution of 1:20000 (under 40x lens). Heat mediated antigen retrieval with Tris-EDTA buffer (pH 9.0).



Immunohistochemical analysis of paraffin-embedded human placenta tissue slide using 85182-1-RR (Glycophorin A/CD235a antibody) at dilution of 1:20000 (under 20x lens). Heat mediated antigen retrieval with Tris-EDTA buffer (pH 9.0).