

HUWE1 Recombinant antibody

Catalog Number: 85177-3-RR

Basic Information

Catalog Number:

85177-3-RR

Concentration:

1000 µg/ml

Source:

Rabbit

Isotype:

IgG

Immunogen Catalog Number:

AG13763

GenBank Accession Number:

BC002602

GeneID (NCBI):

10075

UNIPROT ID:

Q7Z6Z7

Full Name:

HECT, UBA and WWE domain
containing 1

Calculated MW:

437 aa, 482 kDa

Observed MW:

482 kDa

Purification Method:

Protein A purification

CloneNo.:

242702F10

Recommended Dilutions:

WB 1:1000-1:6000

IHC 1:200-1:800

Applications

Tested Applications:

WB, IHC, FC (Intra), ELISA

Species Specificity:

human, mouse

**Note-IHC: suggested antigen retrieval with
TE buffer pH 9.0; (*) Alternatively, antigen
retrieval may be performed with citrate
buffer pH 6.0**

Positive Controls:

WB : A431 cells, NIH/3T3 cells

IHC : human rectal cancer tissue, mouse testis tissue

Background Information

HUWE1 encodes a HECT domain ubiquitin ligase which is a large protein (500 kDa) has attracted considerable interest because several and quite disparate substrates have been assigned to this E3. It has a role in regulating Bergmann glia differentiation and this ubiquitin ligase orchestrates the programming of the neural progenitors that give rise to neurons and glia in the cerebellum. HUWE1 is essential for proliferation of a subset of tumor cells, and negative regulator of TP53 during the colorectal carcinoma progression through the ubiquitination pathway mediated by the HECT domain (PMID:15567145). HUWE1 plays a critical role in lung cancer and increased HUWE1 expression is significantly associated with worse prognosis which suggest that HUWE1 might be a potential target for lung cancer therapy (PMID: 30026863).

Storage

Storage:

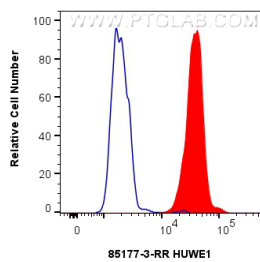
Store at -20°C. Stable for one year after shipment.

Storage Buffer:

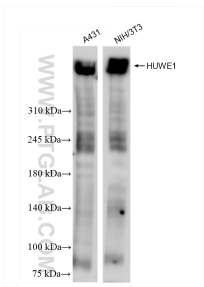
PBS with 0.02% sodium azide and 50% glycerol, pH7.3

Aliquoting is unnecessary for -20°C storage

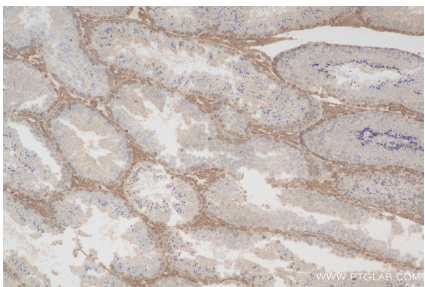
Selected Validation Data



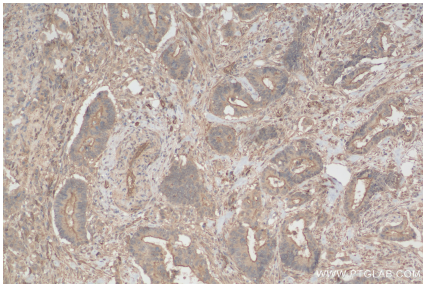
1x10⁶ HeLa cells were intracellularly stained with 0.25 ug HUWE1 Recombinant antibody (85177-3-RR, Clone:242702F10) and CoraLite®488-Conjugated Goat Anti-Rabbit IgG(H+L) (SA00013-2)(red), or 0.25 ug Rabbit IgG Isotype Control RecAb (98136-1-RR, Clone: 240953C9) (blue). Cells were fixed with 4% PFA and permeabilized with Flow Cytometry Perm Buffer (PF00011-C).



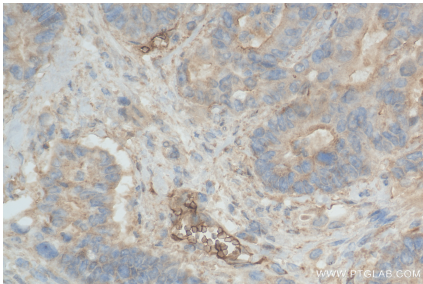
Various lysates were subjected to SDS PAGE followed by western blot with 85177-3-RR (HUWE1 antibody) at dilution of 1:3000 incubated at room temperature for 1.5 hours.



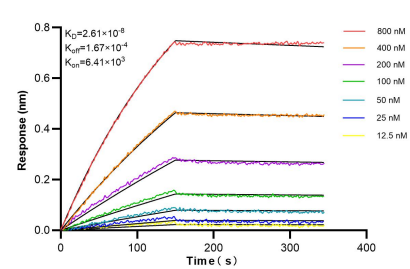
Immunohistochemical analysis of paraffin-embedded mouse testis tissue slide using 85177-3-RR (HUWE1 antibody) at dilution of 1:400 (under 10x lens). Heat mediated antigen retrieval with Tris-EDTA buffer (pH 9.0).



Immunohistochemical analysis of paraffin-embedded human rectal cancer tissue slide using 85177-3-RR (HUWE1 antibody) at dilution of 1:400 (under 10x lens). Heat mediated antigen retrieval with Tris-EDTA buffer (pH 9.0).



Immunohistochemical analysis of paraffin-embedded human rectal cancer tissue slide using 85177-3-RR (HUWE1 antibody) at dilution of 1:400 (under 40x lens). Heat mediated antigen retrieval with Tris-EDTA buffer (pH 9.0).



Bi-layer interferometry (BLI) kinetic assays of 85177-3-RR against Human HUWE1 were performed. The affinity constant is 26.1 nM.