

For Research Use Only

PARP1- Cleaved (Asp214) 1 Recombinant antibody, PBS Only (Capture)

Catalog Number: 85175-1-PBS



Basic Information

Catalog Number:

85175-1-PBS

Concentration:

1 mg/ml

Source:

Rabbit

Isotype:

IgG

GenBank Accession Number:

BC037545

GeneID (NCBI):

142

UNIPROT ID:

P09874

Full Name:

poly (ADP-ribose) polymerase 1

Calculated MW:

1014 aa, 113 kDa

Purification Method:

Protein A purification

CloneNo.:

242461B10

Applications

Tested Applications:

Sandwich ELISA, Indirect ELISA, Sample test

Species Specificity:

human

Background Information

Storage

Storage:

Store at -80°C.

The product is shipped with ice packs. Upon receipt, store it immediately at -80°C

Storage Buffer:

PBS only, pH7.3

For technical support and original validation data for this product please contact:

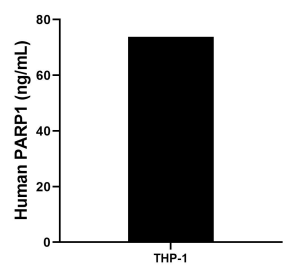
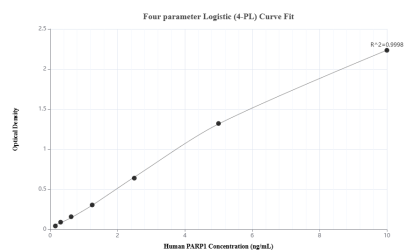
T: 4006900926

E: Proteintech-CN@ptglab.com

W: ptgcn.com

This product is exclusively available under Proteintech Group brand and is not available to purchase from any other manufacturer.

Selected Validation Data



Sandwich ELISA standard curve of MP01904-1, Human PARP1 Recombinant Matched Antibody Pair - PBS only. 85175-1-PBS was coated to a plate as the capture antibody and incubated with serial dilutions of standard SY02434. 85175-2-PBS was HRP conjugated as the detection antibody. Range: 0.156-10 ng/mL

The mean PARP1 concentration was determined to be 73.75 ng/mL in THP-1 cell extract based on a 4.4 mg/mL extract load.