

For Research Use Only

# FOXE1 Recombinant antibody, PBS Only (Detector)

Catalog Number: 85172-2-PBS



## Basic Information

Catalog Number:

85172-2-PBS

Size:

1 mg/ml

Source:

Rabbit

Isotype:

IgG

GenBank Accession Number:

NM\_004473

GeneID (NCBI):

2304

UNIPROT ID:

O00358

Full Name:

forkhead box E1 (thyroid transcription factor 2)

Calculated MW:

38 kDa

Purification Method:

Protein A purification

CloneNo.:

241188F7

## Applications

Tested Applications:

Sandwich ELISA, Indirect ELISA, Sample test

Species Specificity:

human

## Background Information

### Storage

Storage:

Store at -80°C.

The product is shipped with ice packs. Upon receipt, store it immediately at -80°C

Storage Buffer:

PBS Only

For technical support and original validation data for this product please contact:

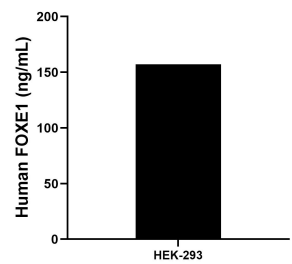
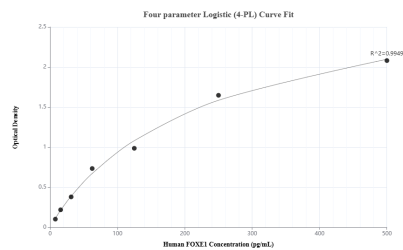
T: 4006900926

E: [Proteintech-CN@ptglab.com](mailto:Proteintech-CN@ptglab.com)

W: [ptgcn.com](http://ptgcn.com)

This product is exclusively available under Proteintech Group brand and is not available to purchase from any other manufacturer.

## Selected Validation Data



Sandwich ELISA standard curve of MP01903-1, Human FOXE1 Recombinant Matched Antibody Pair - PBS only. 85172-1-PBS was coated to a plate as the capture antibody and incubated with serial dilutions of standard SY01432. 85172-2-PBS was HRP conjugated as the detection antibody. Range: 7.81-500 pg/mL

The mean FOXE1 concentration was determined to be 157.10 ng/mL in HEK-293 cell extract based on a 3.3 mg/mL extract load.