

For Research Use Only

# KIR2DL1 Recombinant antibody, PBS Only

Catalog Number: 85168-2-PBS



## Basic Information

Catalog Number:

85168-2-PBS

Concentration:

1000 µg/ml

Source:

Rabbit

Isotype:

IgG

GenBank Accession Number:

BC069344

GeneID (NCBI):

3802

UNIPROT ID:

P43626

Full Name:

killer cell immunoglobulin-like receptor, two domains, long cytoplasmic tail, 1

Calculated MW:

39 kDa

Observed MW:

45 kDa

Purification Method:

Protein A purification

CloneNo.:

242398B7

## Applications

Tested Applications:

WB, Indirect ELISA

Species Specificity:

human

## Background Information

Killer cell immunoglobulin-like receptor 2DL1 (KIR2DL1, also known as CD158A and NKAT1) is an inhibitory receptor of NK cells, with  $\beta$ -arrestin 2 mediated recruitment of the tyrosine phosphatases SHP-1 and SHP-2 to KIR2DL1 and facilitated downstream inhibitory signaling (PMID: 18604210). The effector function of NK cells expressing KIR2DL1 or KIR2DS1 is highly influenced by genetic variability and is calibrated by co-expression of additional NK receptors and cognate HLA-C2 ligands (PMID: 31024561).

## Storage

Storage:

Store at -80°C.

**The product is shipped with ice packs. Upon receipt, store it immediately at -80°C**

Storage Buffer:

PBS Only

For technical support and original validation data for this product please contact:

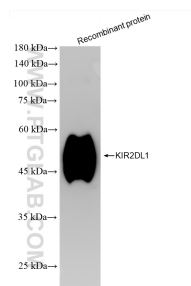
T: 4006900926

E: Proteintech-CN@ptglab.com

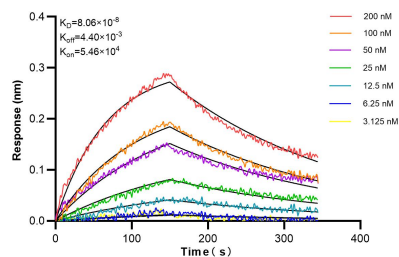
W: ptgcn.com

**This product is exclusively available under Proteintech Group brand and is not available to purchase from any other manufacturer.**

## Selected Validation Data



Recombinant protein were subjected to SDS PAGE followed by western blot with 85168-2-RR (KIR2DL1 antibody) at dilution of 1:10000 incubated at room temperature for 1.5 hours. This data was developed using the same antibody clone with 85168-2-PBS in a different storage buffer formulation.



Biolayer interferometry (BLI) kinetic assays of 85168-2-RR against Human KIR2DL1 were performed. The affinity constant is 80.6 nM.