

For Research Use Only

Mouse Cd44 Recombinant monoclonal antibody, PBS Only (Detector)

Catalog Number: 85163-9-PBS



Basic Information

Catalog Number: 85163-9-PBS	GenBank Accession Number: NM_009851.2	Purification Method: Protein A purification
Source: Rabbit	GeneID (NCBI): 12505	CloneNo.: 242666D3
Isotype: IgG	UNIPROT ID: NP_033981	
Immunogen Catalog Number: EG3159	Full Name: CD44 antigen	
	Calculated MW: 86 kDa	

Applications

Tested Applications:
Cytometric bead array, Sandwich ELISA, Indirect ELISA

Species Specificity:
mouse

Background Information

Storage

Storage:
Store at -80°C.
The product is shipped with ice packs. Upon receipt, store it immediately at -80°C

Storage Buffer:
PBS only, pH7.3

For technical support and original validation data for this product please contact:

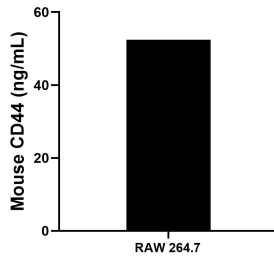
T: 4006900926

E: Proteintech-CN@ptglab.com

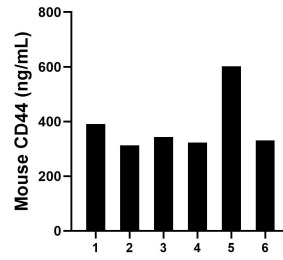
W: ptgcn.com

This product is exclusively available under Proteintech Group brand and is not available to purchase from any other manufacturer.

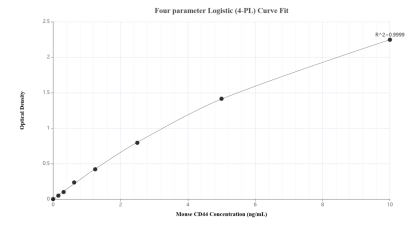
Selected Validation Data



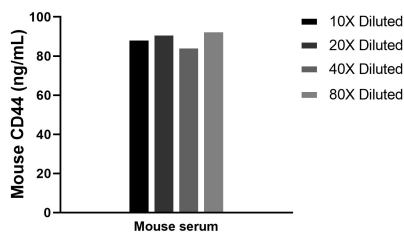
The mean CD44 concentration was determined to be 52.46 ng/mL in RAW 264.7 cell extract based on a 1.20 mg/mL extract load.



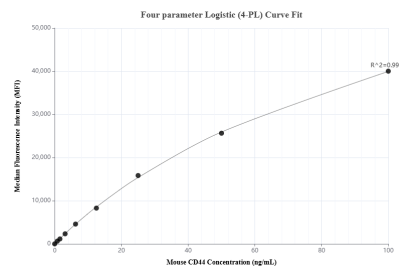
Serum of six mice was measured. The CD44 concentration of detected samples was determined to be 383.66 ng/mL with a range of 313.21-602.16 ng/mL.



Sandwich ELISA standard curve of MP01873-5, Mouse CD44 Recombinant Matched Antibody Pair - PBS only. 85163-5-PBS was coated to a plate as the capture antibody and incubated with serial dilutions of standard Eg3159. 85163-9-PBS was HRP conjugated as the detection antibody. Range: 0.156-10 ng/mL



The mean CD44 concentration was determined to be 89.5 ng/mL in mouse serum.



Cytometric bead array standard curve of MP01873-4, MOUSE CD44 Recombinant Matched Antibody Pair, PBS Only. Capture antibody: 85163-8-PBS. Detection antibody: 85163-9-PBS. Standard: Eg3159. Range: 0.781-100 ng/mL