

For Research Use Only

# IRF9 Recombinant antibody, PBS Only (Capture)

Catalog Number: 85160-4-PBS



## Basic Information

Catalog Number:

85160-4-PBS

Concentration:

1 mg/ml

Source:

Rabbit

Isotype:

IgG

Immunogen Catalog Number:

AG5365

GenBank Accession Number:

BC035716

GeneID (NCBI):

10379

UNIPROT ID:

Q00978

Full Name:

IRF 9

Calculated MW:

393 aa, 44 kDa

Purification Method:

Protein A purification

CloneNo.:

242772G1

## Applications

Tested Applications:

Sandwich ELISA, Indirect ELISA, Sample test

Species Specificity:

human

## Background Information

### Storage

Storage:

Store at -80°C.

The product is shipped with ice packs. Upon receipt, store it immediately at -80°C

Storage Buffer:

PBS Only

For technical support and original validation data for this product please contact:

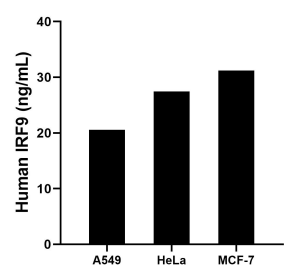
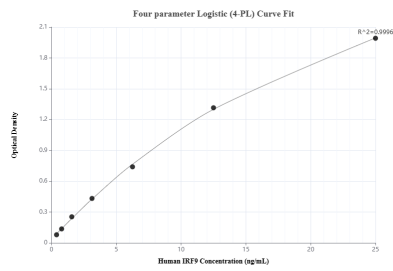
T: 4006900926

E: [Proteintech-CN@ptglab.com](mailto:Proteintech-CN@ptglab.com)

W: [ptgcn.com](http://ptgcn.com)

This product is exclusively available under Proteintech Group brand and is not available to purchase from any other manufacturer.

## Selected Validation Data



Sandwich ELISA standard curve of MP01881-3, Human IRF9 Recombinant Matched Antibody Pair - PBS only. 85160-4-PBS was coated to a plate as the capture antibody and incubated with serial dilutions of standard Ag5365. 85160-5-PBS was HRP conjugated as the detection antibody. Range: 0.391-25 ng/mL

The mean IRF9 concentration was determined to be 20.54 ng/mL in A549 cell extract based on a 2.6 mg/mL extract load, 27.43 ng/mL in HeLa cell extract based on a 1.5 mg/mL extract load and 31.22 ng/mL in MCF-7 cell extract based on a 3.5 mg/mL extract load.