

For Research Use Only

Mouse DPP4/CD26 Recombinant antibody, PBS Only (Detector)

Catalog Number: 85159-2-PBS



Basic Information

Catalog Number:

85159-2-PBS

Concentration:

1 mg/ml

Source:

Rabbit

Isotype:

IgG

Immunogen Catalog Number:

EG1384

GenBank Accession Number:

NM_010074.3

GeneID (NCBI):

13482

UNIPROT ID:

P28843

Full Name:

dipeptidylpeptidase 4

Calculated MW:

87 kDa

Purification Method:

Protein A purification

CloneNo.:

242823D2

Applications

Tested Applications:

Cytometric bead array, Sandwich ELISA, Indirect ELISA, Sample test

Species Specificity:

mouse

Background Information

Storage

Storage:

Store at -80°C.

The product is shipped with ice packs. Upon receipt, store it immediately at -80°C

Storage Buffer:

PBS only, pH7.3

For technical support and original validation data for this product please contact:

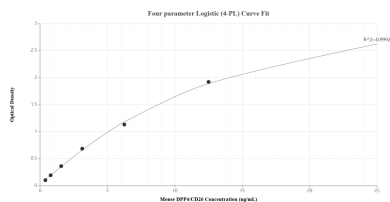
T: 4006900926

E: Proteintech-CN@ptglab.com

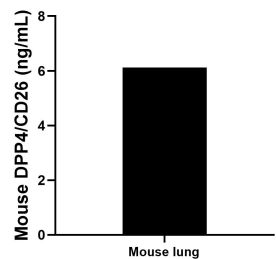
W: ptgcn.com

This product is exclusively available under Proteintech Group brand and is not available to purchase from any other manufacturer.

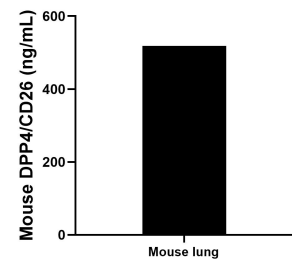
Selected Validation Data



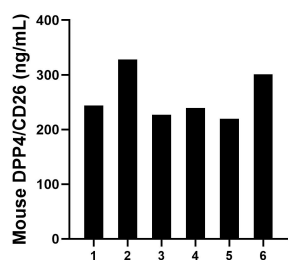
Sandwich ELISA standard curve of MP01879-3, Mouse DPP4/CD26 Recombinant Matched Antibody Pair - PBS only. 85159-4-PBS was coated to a plate as the capture antibody and incubated with serial dilutions of standard Eg1384. 85159-2-PBS was HRP conjugated as the detection antibody. Range: 0.391-25 ng/mL



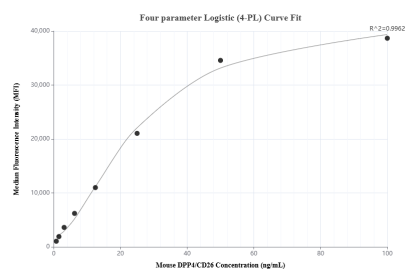
Mouse lung (3 lungs in 1-2 mm pieces in 100 mL of medium) was cultured in RPMI supplemented. An aliquot of the cell culture supernatant was removed, assayed for DPP4/CD26, and measured 6.12 ng/mL



The mean DPP4/CD26 concentration was determined to be 518.45 ng/mL in mouse lung tissue extract based on a 5.90 mg/mL extract load.



Serum of six mice was measured. The DPP4/CD26 concentration of detected samples was determined to be 259.81 ng/mL with a range of 219.51-328.25 ng/mL



Cytometric bead array standard curve of MP01879-2, MOUSE DPP4/CD26 Recombinant Matched Antibody Pair, PBS Only. Capture antibody: 85159-3-PBS. Detection antibody: 85159-2-PBS. Standard: Eg1384. Range: 0.781-100 ng/mL