

For Research Use Only

SORBS1 Recombinant antibody, PBS Only (Capture)

Catalog Number: 85158-2-PBS



Basic Information

Catalog Number:

85158-2-PBS

Concentration:

1 mg/ml

Source:

Rabbit

Isotype:

IgG

Immunogen Catalog Number:

AG4828

GenBank Accession Number:

BC042612

GeneID (NCBI):

10580

UNIPROT ID:

Q9BX66

Full Name:

sorbin and SH3 domain containing 1

Calculated MW:

1292 aa, 142 kDa

Purification Method:

Protein A purification

CloneNo.:

242797G4

Applications

Tested Applications:

Cytometric bead array, Sandwich ELISA, Indirect ELISA, Sample test

Species Specificity:

human

Background Information

Storage

Storage:

Store at -80°C.

The product is shipped with ice packs. Upon receipt, store it immediately at -80°C

Storage Buffer:

PBS Only

For technical support and original validation data for this product please contact:

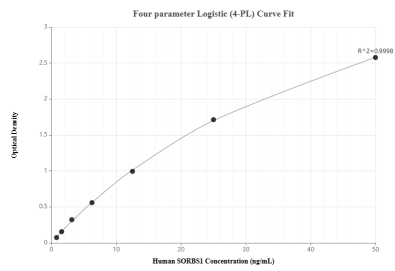
T: 4006900926

E: Proteintech-CN@ptglab.com

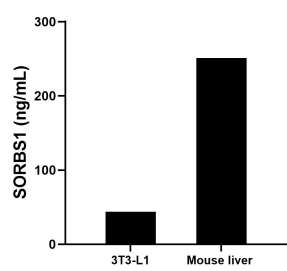
W: ptgcn.com

This product is exclusively available under Proteintech Group brand and is not available to purchase from any other manufacturer.

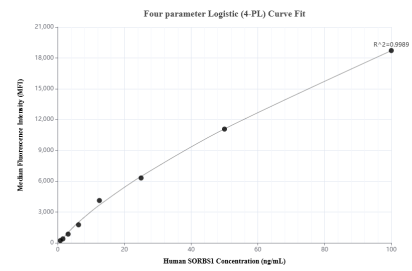
Selected Validation Data



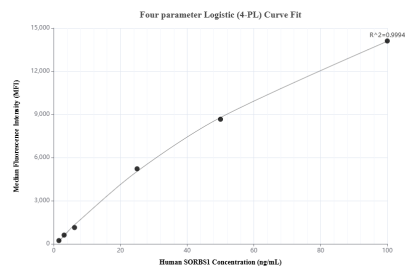
Sandwich ELISA standard curve of MP01871-1, Human SORBS1 Recombinant Matched Antibody Pair - PBS only. 85158-2-PBS was coated to a plate as the capture antibody and incubated with serial dilutions of standard Ag4828. 85158-3-PBS was HRP conjugated as the detection antibody. Range: 0.781-50 ng/mL



The mean SORBS1 concentration was determined to be 43.68 ng/mL in 3T3-L1 cell extract based on a 1.3 mg/mL extract load and 250.85 ng/mL in mouse liver tissue extract based on a 3.7 mg/mL extract load.



Cytometric bead array standard curve of MP01871-1, SORBS1 Recombinant Matched Antibody Pair, PBS Only. Capture antibody: 85158-2-PBS. Detection antibody: 85158-3-PBS. Standard: Ag4828. Range: 0.781-100 ng/mL



Cytometric bead array standard curve of MP01871-2, SORBS1 Recombinant Matched Antibody Pair, PBS Only. Capture antibody: 85158-2-PBS. Detection antibody: 85158-1-PBS. Standard: Ag4828. Range: 1.563-100 ng/mL