

For Research Use Only

ZFP36L2 Recombinant antibody, PBS Only (Capture)

Catalog Number: 85154-6-PBS



Basic Information

Catalog Number:

85154-6-PBS

Concentration:

1 mg/ml

Source:

Rabbit

Isotype:

IgG

Immunogen Catalog Number:

AG13515

GenBank Accession Number:

BC005010

GeneID (NCBI):

678

UNIPROT ID:

P47974

Full Name:

zinc finger protein 36, C3H type-like 2

Calculated MW:

51 kDa

Purification Method:

Protein A purification

CloneNo.:

242776D3

Applications

Tested Applications:

Sandwich ELISA, Indirect ELISA, Sample test

Species Specificity:

human

Background Information

Storage

Storage:

Store at -80°C.

The product is shipped with ice packs. Upon receipt, store it immediately at -80°C

Storage Buffer:

PBS only, pH7.3

For technical support and original validation data for this product please contact:

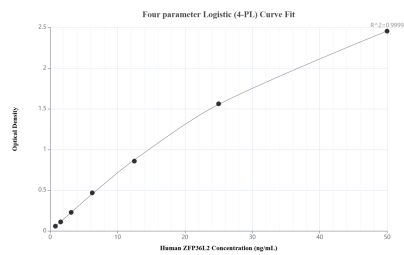
T: 4006900926

E: Proteintech-CN@ptglab.com

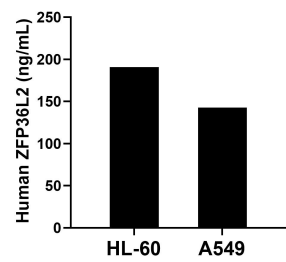
W: ptgcn.com

This product is exclusively available under Proteintech Group brand and is not available to purchase from any other manufacturer.

Selected Validation Data



Sandwich ELISA standard curve of MP01862-3, Human ZFP36L2 Recombinant Matched Antibody Pair - PBS only. 85154-6-PBS was coated to a plate as the capture antibody and incubated with serial dilutions of standard Ag13515. 85154-1-PBS was HRP conjugated as the detection antibody. Range: 0.781-50 ng/mL



The mean ZFP36L2 concentration was determined to be 190.62 ng/mL in HL-60 cell extract based on a 1.50 mg/mL extract load and 142.84 ng/mL in A549 cell extract based on a 2.60 mg/mL extract load.