

For Research Use Only

ZFP36L2 Recombinant antibody

Catalog Number: 85154-4-RR



Basic Information

Catalog Number:

85154-4-RR

Concentration:

1000 µg/ml

Source:

Rabbit

Isotype:

IgG

Immunogen Catalog Number:

AG13515

GenBank Accession Number:

BC005010

GeneID (NCBI):

678

UNIPROT ID:

P47974

Full Name:

zinc finger protein 36, C3H type-like 2

Calculated MW:

51 kDa

Observed MW:

60 kDa

Purification Method:

Protein A purification

CloneNo.:

242776C5

Recommended Dilutions:

WB 1:5000-1:50000

Applications

Tested Applications:

WB, ELISA

Species Specificity:

human, mouse, monkey

Positive Controls:

WB : HeLa cells, RAW 264.7 cells, Jurkat cells, MCF-7 cells, HepG2 cells, COS-7 cells

Background Information

ZFP36L2 (Zinc finger protein 36 like 2) is an RNA-binding protein belonging to the ZFP36 family, which regulates gene expression at the post-transcriptional level by binding and destabilizing certain AU-rich elements (ARE) located in the 3' untranslated regions (3' UTRs) of mRNA (PMID: 29518627). Moreover, ZFP36L2 is a key protein that controls S-phase progression in the case of genome instability (PMID: 29449217).

Storage

Storage:

Store at -20°C. Stable for one year after shipment.

Storage Buffer:

PBS with 0.02% sodium azide and 50% glycerol, pH7.3

Aliquoting is unnecessary for -20°C storage

For technical support and original validation data for this product please contact:

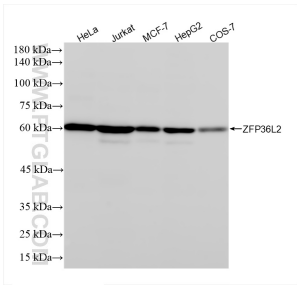
T: 4006900926

E: Proteintech-CN@ptglab.com

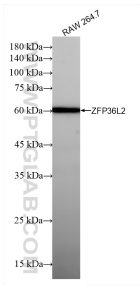
W: ptgcn.com

This product is exclusively available under Proteintech Group brand and is not available to purchase from any other manufacturer.

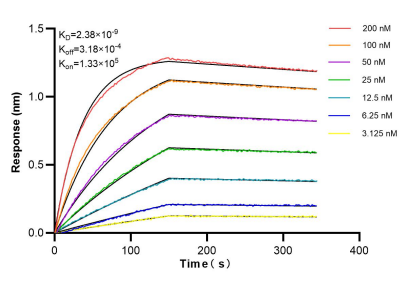
Selected Validation Data



Various lysates were subjected to SDS PAGE followed by western blot with 85154-4-RR (ZFP36L2 antibody) at dilution of 1:10000 incubated at room temperature for 1.5 hours.



Various lysates were subjected to SDS PAGE followed by western blot with 85154-4-RR (ZFP36L2 antibody) at dilution of 1:10000 incubated at room temperature for 1.5 hours.



Biolayer interferometry (BLI) kinetic assays of 85154-4-RR against Human ZFP36L2 were performed. The affinity constant is 2.38 nM.