

For Research Use Only

KCNV1 Recombinant antibody, PBS Only (Capture)

Catalog Number: 85153-3-PBS



Basic Information

Catalog Number: 85153-3-PBS	GenBank Accession Number: BC028739	Purification Method: Protein A purification
Concentration: 1000 µg/ml	GeneID (NCBI): 27012	CloneNo.: 242865E3
Source: Rabbit	UNIPROT ID: Q6PIU1	
Isotype: IgG	Full Name: potassium channel, subfamily V, member 1	
Immunogen Catalog Number: AG3376	Calculated MW: 500 aa, 56 kDa	
	Observed MW: 50 kDa	

Applications

Tested Applications:
WB, Cytometric bead array, Indirect ELISA

Species Specificity:
human, mouse, rat

Background Information

Potassium voltage-gated channel subfamily V member 1 (KCNV1, also known as Kv8.1) is a voltage-gated potassium channel that plays a role in the repolarization phase of the action potential (PMID: 39003683). It is involved in regulating neuronal excitability and is essential for maintaining normal electrical signaling in the nervous system (PMID: 38911266). The function of KCNV1 may also include inhibiting specific types of outwardly rectifying potassium channels (PMID: 8670833).

Storage

Storage:
Store at -80°C.
The product is shipped with ice packs. Upon receipt, store it immediately at -80°C

Storage Buffer:
PBS Only

For technical support and original validation data for this product please contact:

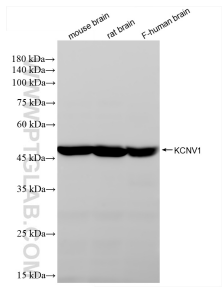
T: 4006900926

E: Proteintech-CN@ptglab.com

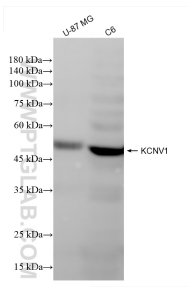
W: ptgcn.com

This product is exclusively available under Proteintech Group brand and is not available to purchase from any other manufacturer.

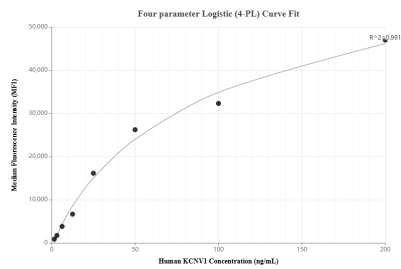
Selected Validation Data



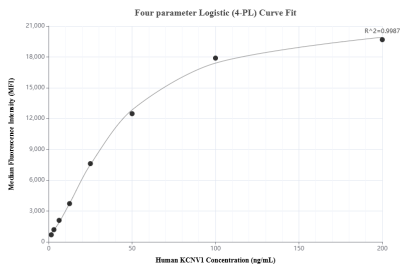
Various lysates were subjected to SDS PAGE followed by western blot with 85153-3-RR (KCNV1 antibody) at dilution of 1:5000 incubated at room temperature for 1.5 hours. This data was developed using the same antibody clone with 85153-3-PBS in a different storage buffer formulation.



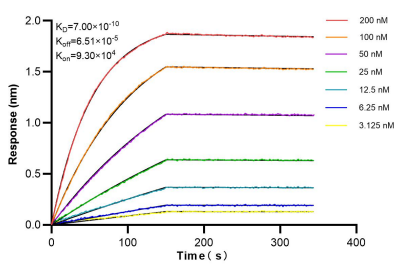
Various lysates were subjected to SDS PAGE followed by western blot with 85153-3-RR (KCNV1 antibody) at dilution of 1:5000 incubated at room temperature for 1.5 hours. This data was developed using the same antibody clone with 85153-3-PBS in a different storage buffer formulation.



Cytometric bead array standard curve of MP01872-1, KCNV1 Recombinant Matched Antibody Pair, PBS Only. Capture antibody: 85153-3-PBS. Detection antibody: 85153-2-PBS. Standard: Ag3376. Range: 1.563-200 ng/mL



Cytometric bead array standard curve of MP01872-2, KCNV1 Recombinant Matched Antibody Pair, PBS Only. Capture antibody: 85153-3-PBS. Detection antibody: 85153-1-PBS. Standard: Ag3376. Range: 1.563-200 ng/mL



Bioluminescence resonance energy transfer (BRET) kinetic assays of 85153-3-RR against Human KCNV1 were performed. The affinity constant is 0.70 nM.