

# CD13 Recombinant monoclonal antibody

Catalog Number: 85152-5-RR

## Basic Information

<b>Catalog Number:</b> 85152-5-RR	<b>GenBank Accession Number:</b> NM_008486.2	<b>Purification Method:</b> Protein A purification
<b>Source:</b> Rabbit	<b>GeneID (NCBI):</b> 16790	<b>CloneNo.:</b> 242845B5
<b>Isotype:</b> IgG	<b>UNIPROT ID:</b> P97449	<b>Recommended Dilutions:</b> WB: 1:5000-1:50000 IF/ICC: 1:50-1:500
<b>Immunogen Catalog Number:</b> EG3592	<b>Full Name:</b> alanyl (membrane) aminopeptidase	
	<b>Calculated MW:</b> 110 kDa	
	<b>Observed MW:</b> 150 kDa	

## Applications

<b>Tested Applications:</b> WB, IF/ICC, ELISA	<b>Positive Controls:</b>
<b>Species Specificity:</b> mouse	<b>WB :</b> mouse kidney tissue, mouse liver tissue <b>IF/ICC :</b> RAW 264.7 cells,

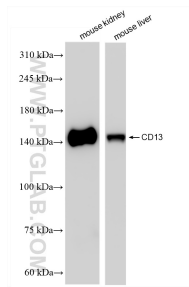
## Background Information

CD13, also named as APN, ANPEP (aminopeptidase N) or PEPN, is belongs to the peptidase M1 family. CD13 is a heavily glycosylated, ~150-240 kDa, type-II membrane, expressed by most cells of myeloid origin including monocytes, macrophages, granulocytes, and their hematopoietic precursors. It is also abundantly expressed in the brush border of epithelial cells from renal proximal tubules and small intestine, in prostatic epithelial cells, in bile duct canaliculi, in mast cells, and, in some cases, in fibroblasts and smooth muscle cells. CD13 is a multifunctional protein and plays varying roles in cell migration, cell proliferation, cell differentiation and so on. CD13 participates in angiogenesis generating and modulating angiogenic signals, and can be a marker of angiogenic vessels. CD13 is also a pan-myeloid marker, present on mature granulocytes and monocytes. (PMID: 8805662, 10098327, 18603472, 18097955, 17897790, 17888402, 21339174)

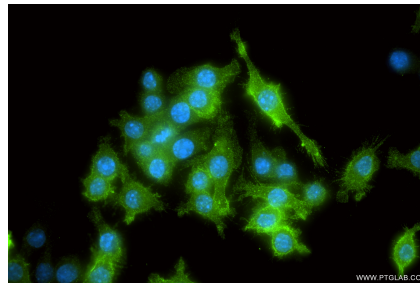
## Storage

**Storage:**  
Store at -20°C. Stable for one year after shipment.  
**Storage Buffer:**  
PBS with 0.02% sodium azide and 50% glycerol, pH7.3  
**Aliquoting is unnecessary for -20°C storage**

## Selected Validation Data



Various lysates were subjected to SDS PAGE followed by western blot with 85152-5-RR (CD13 antibody) at dilution of 1:10000 incubated at room temperature for 1.5 hours.



Immunofluorescent analysis of (4% PFA) fixed RAW 264.7 cells using CD13 antibody (85152-5-RR, Clone: 242845B5 ) at dilution of 1:200 and CoraLite® 488-Conjugated Goat Anti-Rabbit IgG(H+L) (SA00013-2).