

For Research Use Only

Mouse CD13 Recombinant antibody, PBS Only (Capture)

Catalog Number: 85152-1-PBS



Basic Information

Catalog Number:

85152-1-PBS

Concentration:

1 mg/ml

Source:

Rabbit

Isotype:

IgG

Immunogen Catalog Number:

EG3592

GenBank Accession Number:

NM_008486.2

GeneID (NCBI):

16790

UNIPROT ID:

P97449

Full Name:

alanyl (membrane) aminopeptidase

Calculated MW:

110 kDa

Purification Method:

Protein A purification

CloneNo.:

242845A1

Applications

Tested Applications:

Cytometric bead array, Sandwich ELISA, Indirect ELISA,
Sample test

Species Specificity:

mouse

Background Information

Storage

Storage:

Store at -80°C.

The product is shipped with ice packs. Upon receipt, store it immediately at -80°C

Storage Buffer:

PBS only, pH7.3

For technical support and original validation data for this product please contact:

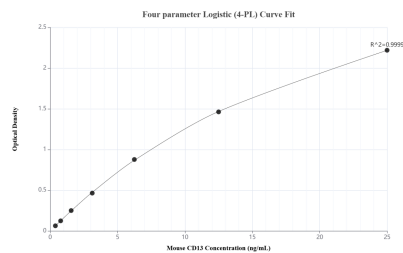
T: 4006900926

E: Proteintech-CN@ptglab.com

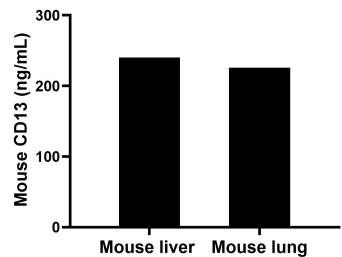
W: ptgcn.com

This product is exclusively available under Proteintech Group brand and is not available to purchase from any other manufacturer.

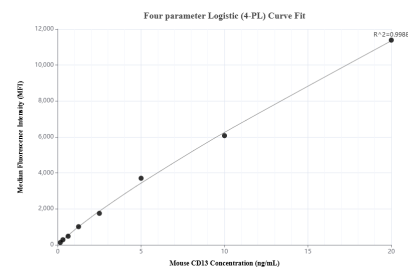
Selected Validation Data



Sandwich ELISA standard curve of MP01861-3, Mouse CD13 Recombinant Matched Antibody Pair - PBS only. 85152-1-PBS was coated to a plate as the capture antibody and incubated with serial dilutions of standard Eg3592. 85152-2-PBS was HRP conjugated as the detection antibody. Range: 0.391-25 ng/mL.



The mean CD13 concentration was determined to be 240.44 ng/mL in mouse liver tissue extract based on a 3.70 mg/mL extract load and 226.10 ng/mL in mouse lung tissue extract based on a 5.90 mg/mL extract load.



Cytometric bead array standard curve of MP01861-2, MOUSE CD13 Recombinant Matched Antibody Pair, PBS Only. Capture antibody: 85152-1-PBS. Detection antibody: 85152-3-PBS. Standard: Eg3592. Range: 0.156-20 ng/mL.