

For Research Use Only

RFC1 Recombinant antibody

Catalog Number: 85148-4-RR



Basic Information

Catalog Number: 85148-4-RR	GenBank Accession Number: BC051751	Purification Method: Protein A purification
Concentration: 1000 µg/ml	GeneID (NCBI): 5981	CloneNo.: 242818H6
Source: Rabbit	UNIPROT ID: P35251	Recommended Dilutions: WB: 1:5000-1:50000 IHC: 1:750-1:3000 IF/ICC: 1:500-1:2000
Isotype: IgG	Full Name: replication factor C (activator 1) 1, 145kDa	
Immunogen Catalog Number: AG13585	Calculated MW: 128 kDa	
	Observed MW: 140 kDa	

Applications

Tested Applications: WB, IHC, IF/ICC, ELISA	Positive Controls:
Species Specificity: human	WB : Jurkat cells, HEK-293T cells, A431 cells, HepG2 cells, HeLa cells
Note-IHC: suggested antigen retrieval with TE buffer pH 9.0; (*) Alternatively, antigen retrieval may be performed with citrate buffer pH 6.0	IHC : human colon tissue,
	IF/ICC : HeLa cells,

Background Information

Replication factor C subunit 1 (RFC1) is a pentameric DNA polymerase accessory protein involved in DNA replication and repair (PMID: 10051561). It was reported as a cause of cerebellar ataxia with neuropathy and vestibular areflexia syndrome (CANVAS) (PMID: 30926972).

Storage

Storage:
Store at -20°C. Stable for one year after shipment.
Storage Buffer:
PBS with 0.02% sodium azide and 50% glycerol, pH7.3
Aliquoting is unnecessary for -20°C storage

For technical support and original validation data for this product please contact:

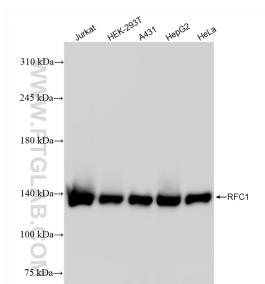
T: 4006900926

E: Proteintech-CN@ptglab.com

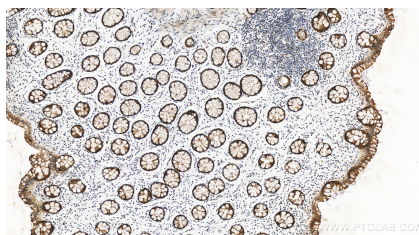
W: ptgcn.com

This product is exclusively available under Proteintech Group brand and is not available to purchase from any other manufacturer.

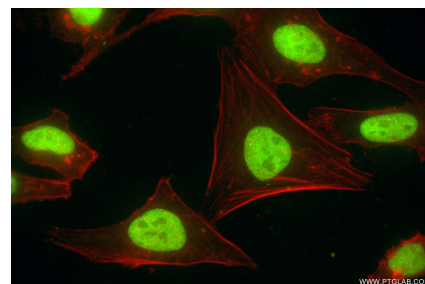
Selected Validation Data



Various lysates were subjected to SDS PAGE followed by western blot with 85148-4-RR (RFC1 antibody) at dilution of 1:10000 incubated at room temperature for 1.5 hours.



Immunohistochemical analysis of paraffin-embedded human colon tissue slide using 85148-4-RR (RFC1 antibody) at dilution of 1:1500 (under 20x lens). Heat mediated antigen retrieval with Tris-EDTA buffer (pH 9.0).



Immunofluorescent analysis of (4% PFA) fixed HeLa cells using RFC1 antibody (85148-4-RR, Clone: 242818H6) at dilution of 1:1000 and CoraLite®488-Conjugated Goat Anti-Rabbit IgG(H+L) (SA00013-2), CL594-Phalloidin (red).