

For Research Use Only

MCT2/SLC16A7 Recombinant antibody

Catalog Number: 85145-3-RR



Basic Information

Catalog Number: 85145-3-RR	GenBank Accession Number: BC030693	Purification Method: Protein A purification
Concentration: 1000 µg/ml	GeneID (NCBI): 9194	CloneNo.: 242811F6
Source: Rabbit	UNIPROT ID: O60669	Recommended Dilutions: WB 1:1000-1:6000
Isotype: IgG	Full Name: solute carrier family 16, member 7 (monocarboxylic acid transporter 2)	
Immunogen Catalog Number: AG14201	Calculated MW: 478 aa, 52 kDa	
	Observed MW: 40-52 kDa	

Applications

Tested Applications: WB, ELISA	Positive Controls: WB : BxPC-3 cells, K-562 cells, SH-SY5Y cells
Species Specificity: human	

Background Information

SLC16A7, also named MCT2, is a proton-coupled monocarboxylate transporter catalyzing the rapid transport across the plasma membrane of many monocarboxylates. It has been reported that SLC16A7 is the primary monocarboxylate transporter in Purkinje cells and can be detected in the brain, cerebellum, liver, and kidney, but not in vascular smooth muscle cells, pericytes, endothelium, heart, lung, or stomach. There are some isoforms of SLC16A7 with bands around 52 kDa and 40-45 kDa in SDS-PAGE. The 80 kDa protein might be a dimer, similar to the papers published. (PMID: 9482213, 15749979, 11291733, 16901736)

Storage

Storage:
Store at -20°C. Stable for one year after shipment.
Storage Buffer:
PBS with 0.02% sodium azide and 50% glycerol, pH7.3
Aliquoting is unnecessary for -20°C storage

For technical support and original validation data for this product please contact:

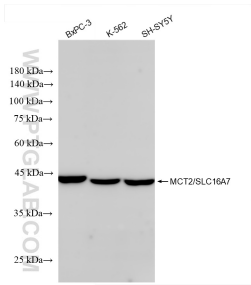
T: 4006900926

E: Proteintech-CN@ptglab.com

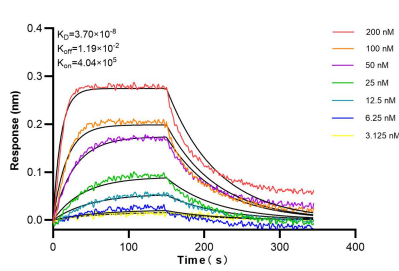
W: ptgcn.com

This product is exclusively available under Proteintech Group brand and is not available to purchase from any other manufacturer.

Selected Validation Data



Various lysates were subjected to SDS PAGE followed by western blot with 85145-3-RR (SLC16A7 antibody) at dilution of 1:3000 incubated at room temperature for 1.5 hours.



Biolayer interferometry (BLI) kinetic assays of 85145-3-RR against Human MCT2/SLC16A7 were performed. The affinity constant is 37.0 nM.