

For Research Use Only

SLC16A7 Recombinant antibody, PBS Only (Detector)

Catalog Number: 85145-2-PBS



Basic Information

Catalog Number:

85145-2-PBS

Concentration:

1 mg/ml

Source:

Rabbit

Isotype:

IgG

Immunogen Catalog Number:

AG14201

GenBank Accession Number:

BC030693

GeneID (NCBI):

9194

UNIPROT ID:

O60669

Full Name:

solute carrier family 16, member 7
(monocarboxylic acid transporter 2)

Calculated MW:

478 aa, 52 kDa

Purification Method:

Protein A purification

CloneNo.:

242811H4

Applications

Tested Applications:

Cytometric bead array, Sandwich ELISA, Indirect ELISA,
Sample test

Species Specificity:

human

Background Information

Storage

Storage:

Store at -80°C.

The product is shipped with ice packs. Upon receipt, store it immediately at -80°C

Storage Buffer:

PBS Only

For technical support and original validation data for this product please contact:

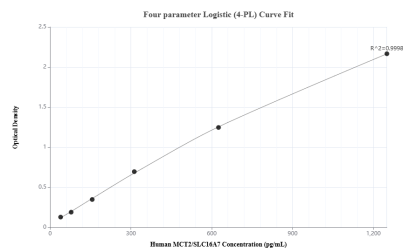
T: 4006900926

E: Proteintech-CN@ptglab.com

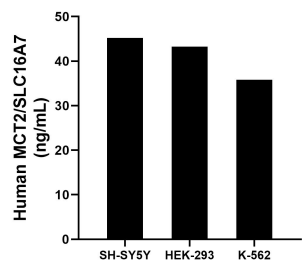
W: ptgcn.com

This product is exclusively available under Proteintech Group brand and is not available to purchase from any other manufacturer.

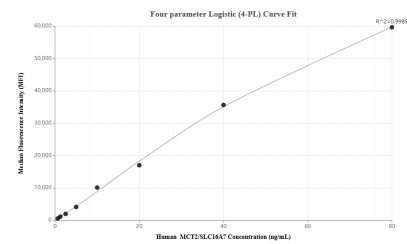
Selected Validation Data



Sandwich ELISA standard curve of MP01823-2, Humanc MCT2/SLC 16A7 Recombinant Matched Antibody Pair - PBS only. 85145-1-PBS was coated to a plate as the capture antibody and incubated with serial dilutions of standard Ag14201. 85145-2-PBS was HRP conjugated as the detection antibody. Range: 39.1-1250 pg/mL



The mean MCT2/SLC16A7 concentration was determined to be 45.22 ng/mL in SH-SY5Y cell extract based on a 3.2 mg/mL extract load, 43.27 ng/mL in HEK-293 cell extract based on a 2.7 mg/mL extract load and 35.80 ng/mL in K-562 cell extract based on a 2.5 mg/mL extract load.



Cytometric bead array standard curve of MP01851-1, MCT2/SLC 16A7 Recombinant Matched Antibody Pair, PBS Only. Capture antibody: 85145-1-PBS. Detection antibody: 85145-2-PBS. Standard: Ag14201. Range: 0.625-80 ng/mL