

For Research Use Only

# GBE1 Recombinant antibody

Catalog Number: 85143-5-RR



## Basic Information

Catalog Number:

85143-5-RR

Concentration:

1000  $\mu$ g/ml

Source:

Rabbit

Isotype:

IgG

Immunogen Catalog Number:

AG14154

GenBank Accession Number:

BC012098

GeneID (NCBI):

2632

UNIPROT ID:

Q04446

Full Name:

glucan (1,4- $\alpha$ -), branching enzyme 1

Calculated MW:

702 aa, 80 kDa

Observed MW:

72 kDa

Purification Method:

Protein A purification

CloneNo.:

242705G3

Recommended Dilutions:

WB 1:5000-1:50000

## Applications

Tested Applications:

WB, ELISA

Species Specificity:

human, mouse, rat

Positive Controls:

WB : PC-3 cells, mouse lung tissue, rat lung tissue, mouse liver tissue, rat liver tissue

## Background Information

GBE1 (glucan (1,4- $\alpha$ -), branching enzyme 1) is essential for the globular and branched structure of glycogen, increasing solubility by creating a hydrophilic surface and reducing intracellular osmotic pressure. It may serve as a potential therapeutic target for treating LUAD (PMID: 31221150). The full sequence can be further processed into a mature form of 75 kDa.

## Storage

Storage:

Store at -20°C. Stable for one year after shipment.

Storage Buffer:

PBS with 0.02% sodium azide and 50% glycerol, pH7.3

Aliquoting is unnecessary for -20°C storage

For technical support and original validation data for this product please contact:

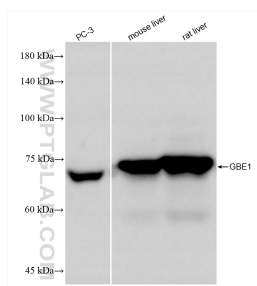
T: 4006900926

E: [Proteintech-CN@ptglab.com](mailto:Proteintech-CN@ptglab.com)

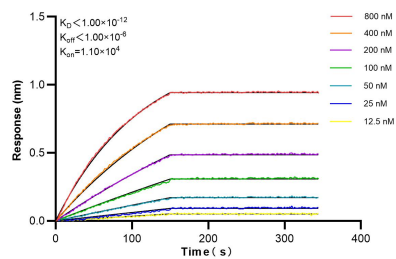
W: [ptgcn.com](http://ptgcn.com)

This product is exclusively available under Proteintech Group brand and is not available to purchase from any other manufacturer.

## Selected Validation Data



Various lysates were subjected to SDS PAGE followed by western blot with 85143-5-RR (GBE1 antibody) at dilution of 1:10000 incubated at room temperature for 1.5 hours.



Biolayer interferometry (BLI) kinetic assays of 85143-5-RR against Human GBE1 were performed. The affinity constant is below 1 pM.