

For Research Use Only

NDRG1 Recombinant antibody, PBS Only (Capture)

Catalog Number: 85141-2-PBS



Basic Information

Catalog Number: 85141-2-PBS	GenBank Accession Number: BC006260	Purification Method: Protein A purification
Concentration: 1 mg/ml	GeneID (NCBI): 10397	CloneNo.: 242322D3
Source: Rabbit	UNIPROT ID: Q92597	
Isotype: IgG	Full Name: N-myc downstream regulated 1	
Immunogen Catalog Number: AG25424	Calculated MW: 43 kDa	

Applications

Tested Applications:
Cytometric bead array, Sandwich ELISA, Indirect ELISA,
Sample test

Species Specificity:
human

Background Information

Storage

Storage:
Store at -80°C.
The product is shipped with ice packs. Upon receipt, store it immediately at -80°C

Storage Buffer:
PBS Only

For technical support and original validation data for this product please contact:

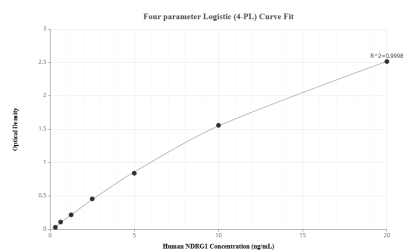
T: 4006900926

E: Proteintech-CN@ptglab.com

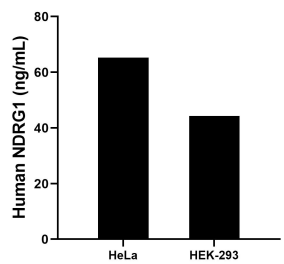
W: ptgcn.com

This product is exclusively available under Proteintech Group brand and is not available to purchase from any other manufacturer.

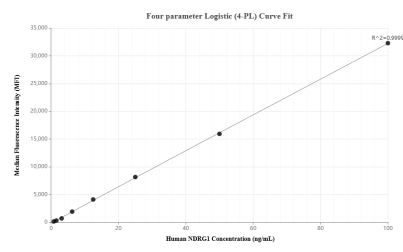
Selected Validation Data



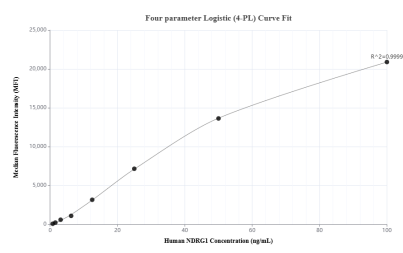
Sandwich ELISA standard curve of MP01823-2, Humanc NDRG1 Recombinant Matched Antibody Pair - PBS only. 85141-2-PBS was coated to a plate as the capture antibody and incubated with serial dilutions of standard Ag25424. 85141-3-PBS was HRP conjugated as the detection antibody. Range: 0.313-20 ng/mL



The mean NDRG1 concentration was determined to be 65.20 ng/mL in HeLa cell extract based on a 1.5 mg/mL extract load and 44.27 ng/mL in HEK-293 cell extract based on a 2.7 mg/mL extract load.



Cytometric bead array standard curve of MP01823-1, NDRG1 Recombinant Matched Antibody Pair, PBS Only. Capture antibody: 85141-2-PBS. Detection antibody: 85141-1-PBS. Standard: Ag25424. Range: 0.781-100 ng/mL



Cytometric bead array standard curve of MP01823-2, NDRG1 Recombinant Matched Antibody Pair, PBS Only. Capture antibody: 85141-2-PBS. Detection antibody: 85141-3-PBS. Standard: Ag25424. Range: 0.781-100 ng/mL