

Complement factor H Recombinant antibody

Catalog Number: 85132-2-RR

Basic Information

Catalog Number:

85132-2-RR

Concentration:

1000 µg/ml

Source:

Rabbit

Isotype:

IgG

Immunogen Catalog Number:

EG3753

GenBank Accession Number:

GeneID (NCBI):

3075

UNIPROT ID:

P08603-1

Full Name:

complement factor H

Calculated MW:

139kDa

Observed MW:

140-150 kDa

Purification Method:

Protein A purification

CloneNo.:

242740E8

Recommended Dilutions:

WB 1:5000-1:50000

Applications

Tested Applications:

WB, ELISA

Species Specificity:

human

Positive Controls:

WB : human plasma,

Background Information

Complement factor H (CFH) is an abundant plasma glycoprotein that regulates the function of the alternative complement pathway in the fluid phase and on cellular surfaces (PMID: 2963625). Factor H binds to C3b, accelerates the decay of the alternative pathway C3-convertase (C3bBb), and acts as a cofactor for the factor I-mediated proteolytic inactivation of C3b (PMID: 15163532). It plays a critical role in the homeostasis of the complement system in plasma and in the protection of bystander host cells and tissues from damage by complement activation. Abnormalities in factor H have been associated with renal disease (PMID: 18190458).

Storage

Storage:

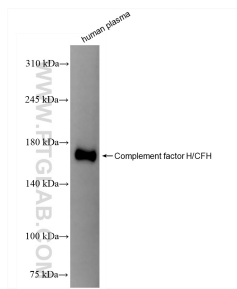
Store at -20°C. Stable for one year after shipment.

Storage Buffer:

PBS with 0.02% sodium azide and 50% glycerol, pH7.3

Aliquoting is unnecessary for -20°C storage

Selected Validation Data



human plasma were subjected to SDS PAGE followed by western blot with 85132-2-RR (Complement factor H/CFH antibody) at dilution of 1:10000 incubated at room temperature for 1.5 hours.