

For Research Use Only

# TCL1A Recombinant antibody, PBS Only (Capture/Detector)

Catalog Number: 85129-2-PBS



## Basic Information

Catalog Number:

85129-2-PBS

Concentration:

1 mg/ml

Source:

Rabbit

Isotype:

IgG

Immunogen Catalog Number:

AG0786

GenBank Accession Number:

BC005831

GeneID (NCBI):

8115

UNIPROT ID:

P56279

Full Name:

T-cell leukemia/lymphoma 1A

Calculated MW:

13 kDa

Purification Method:

Protein A purification

CloneNo.:

242623F12

## Applications

Tested Applications:

Cytometric bead array, Sandwich ELISA, Indirect ELISA,  
Sample test

Species Specificity:

human

## Background Information

### Storage

Storage:

Store at -80°C.

**The product is shipped with ice packs. Upon receipt, store it immediately at -80°C**

Storage Buffer:

PBS Only

For technical support and original validation data for this product please contact:

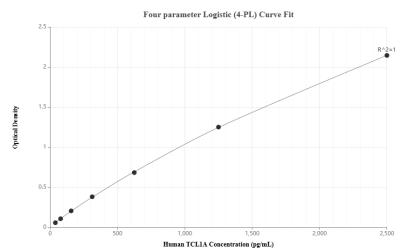
T: 4006900926

E: [Proteintech-CN@ptglab.com](mailto:Proteintech-CN@ptglab.com)

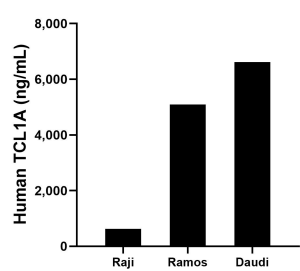
W: [ptgcn.com](http://ptgcn.com)

**This product is exclusively available under Proteintech Group brand and is not available to purchase from any other manufacturer.**

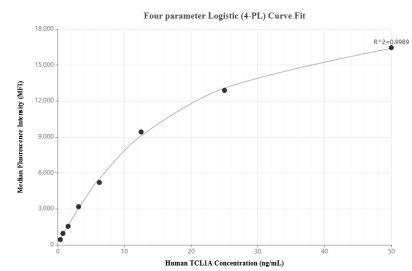
## Selected Validation Data



Sandwich ELISA standard curve of MP01835-3, Human TCL1A Recombinant Matched Antibody Pair - PBS only. 85129-4-PBS was coated to a plate as the capture antibody and incubated with serial dilutions of standard Ag0786. 85129-2-PBS was HRP conjugated as the detection antibody. Range: 39.1-2500 pg/mL



The mean TCL1A concentration was determined to be 627.84 ng/mL in Raji cell extract based on a 3.0 mg/mL extract load, 5,087.48 ng/mL in Ramos cell extract based on a 1.4 mg/mL extract load and 6,616.70 ng/mL in Daudi cell extract based on a 3.6 mg/mL extract load.



Cytometric bead array standard curve of MP01835-2, TCL1A Recombinant Matched Antibody Pair, PBS Only. Capture antibody: 85129-2-PBS. Detection antibody: 85129-1-PBS. Standard: Ag0786. Range: 0.391-50 ng/mL