

For Research Use Only

Mouse CD36/SR-B3 Recombinant antibody, PBS Only (Capture/Detector)

Catalog Number: 85127-2-PBS



Basic Information

Catalog Number:

85127-2-PBS

Concentration:

1 mg/ml

Source:

Rabbit

Isotype:

IgG

GenBank Accession Number:

NM_007643.4

GeneID (NCBI):

12491

UNIPROT ID:

Q08857

Full Name:

CD36 antigen

Calculated MW:

53 kDa

Purification Method:

Protein A purification

CloneNo.:

242662C3

Applications

Tested Applications:

Cytometric bead array, Sandwich ELISA, Indirect ELISA,
Sample test

Species Specificity:

mouse

Background Information

Storage

Storage:

Store at -80°C.

The product is shipped with ice packs. Upon receipt, store it immediately at -80°C

Storage Buffer:

PBS Only

For technical support and original validation data for this product please contact:

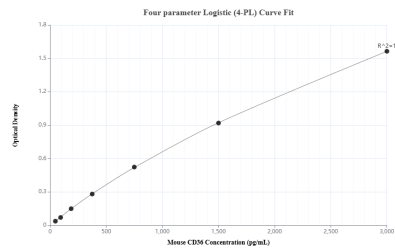
T: 4006900926

E: Proteintech-CN@ptglab.com

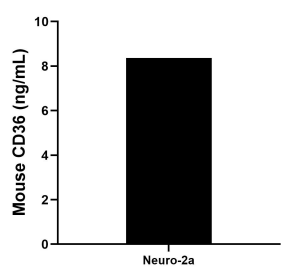
W: ptgcn.com

This product is exclusively available under Proteintech Group brand and is not available to purchase from any other manufacturer.

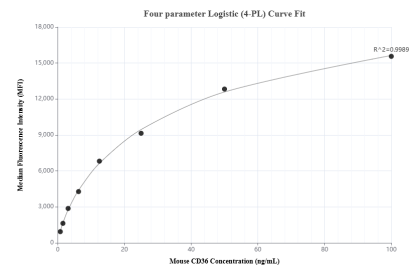
Selected Validation Data



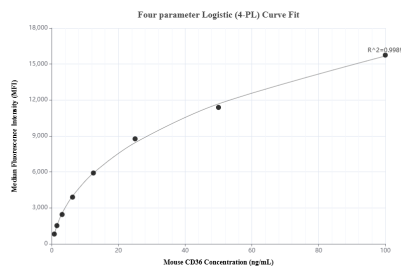
Sandwich ELISA standard curve of MP01829-3, Mouse CD36 Recombinant Matched Antibody Pair - PBS only. 85127-4-PBS was coated to a plate as the capture antibody and incubated with serial dilutions of standard Eg3464. 85127-2-PBS was HRP conjugated as the detection antibody. Range: 46.9-3000 pg/mL



The mean CD36 concentration was determined to be 8.36 ng/mL in Neuro-3a cell extract based on a 1.5 mg/mL extract load.



Cytometric bead array standard curve of MP01829-2, MOUSE CD36 Recombinant Matched Antibody Pair, PBS Only. Capture antibody: 85127-2-PBS. Detection antibody: 85127-3-PBS. Standard: Eg3464. Range: 0.781-100 ng/mL



Cytometric bead array standard curve of MP01829-1, MOUSE CD36 Recombinant Matched Antibody Pair, PBS Only. Capture antibody: 85127-2-PBS. Detection antibody: 85127-1-PBS. Standard: Eg3464. Range: 0.781-100 ng/mL