

For Research Use Only

CCL7 Recombinant antibody, PBS Only (Capture)

Catalog Number: 85123-2-PBS



Basic Information

Catalog Number:

85123-2-PBS

Concentration:

1 mg/ml

Source:

Rabbit

Isotype:

IgG

GenBank Accession Number:

BC092436

GeneID (NCBI):

6354

UNIPROT ID:

P80098

Full Name:

chemokine (C-C motif) ligand 7

Calculated MW:

109 aa, 12 kDa

Purification Method:

Protein A purification

CloneNo.:

242607C3

Applications

Tested Applications:

Cytometric bead array, Sandwich ELISA, Indirect ELISA, Sample test

Species Specificity:

human

Background Information

Storage

Storage:

Store at -80°C.

The product is shipped with ice packs. Upon receipt, store it immediately at -80°C

Storage Buffer:

PBS Only

For technical support and original validation data for this product please contact:

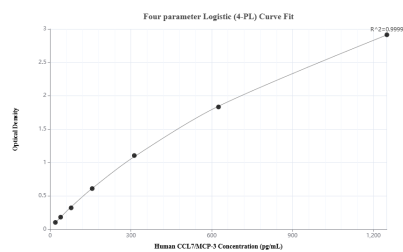
T: 4006900926

E: Proteintech-CN@ptglab.com

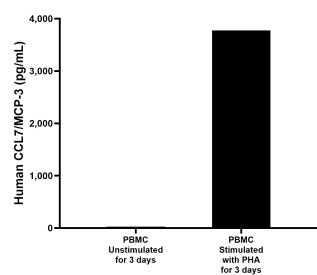
W: ptgcn.com

This product is exclusively available under Proteintech Group brand and is not available to purchase from any other manufacturer.

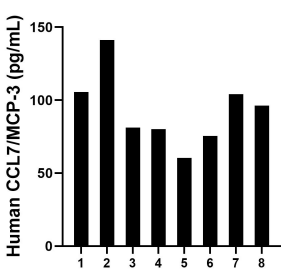
Selected Validation Data



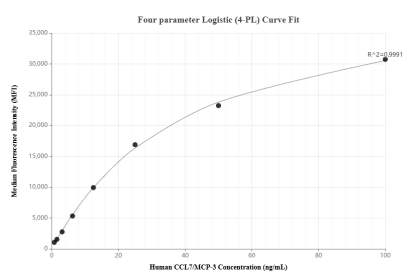
Sandwich ELISA standard curve of MP01847-3, Human CCL7/MCP-3 Recombinant Matched Antibody Pair - PBS only. 85123-2-PBS was coated to a plate as the capture antibody and incubated with serial dilutions of standard Eg3337. 85123-4-PBS was HRP conjugated as the detection antibody. Range: 19.5-1250 pg/mL



Human peripheral blood mononuclear cells (PBMC) were cultured unstimulated or stimulated with 10 μ g/mL PHA for 3 days. The mean CCL7/MCP-3 concentration was determined to be 24.2 pg/mL in unstimulated PBMC supernatant, 3,774.7 pg/mL in PHA stimulated PBMC supernatant.



Serum of eight individual healthy human donors was measured. The human CCL7/MCP-3 concentration of detected samples was determined to be 93.1 pg/mL with a range of 60.4-141.2 pg/mL.



Cytometric bead array standard curve of MP01847-1, CCL7/MCP-3 Recombinant Matched Antibody Pair, PBS Only. Capture antibody: 85123-2-PBS. Detection antibody: 85123-3-PBS. Standard: Eg3337. Range: 0.781-100 ng/mL